



# DISCOVERING ATCC IMMUNOLOGICAL CELLS - MODEL SYSTEMS TO STUDY THE IMMUNE AND CARDIOVASCULAR SYSTEMS

James Clinton, Ph.D.

Scientist, ATCC

February 19, 2015



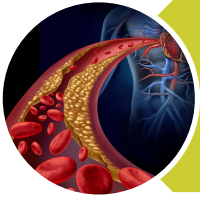
THE ESSENTIALS OF LIFE SCIENCE RESEARCH  
GLOBALLY DELIVERED™

# About ATCC

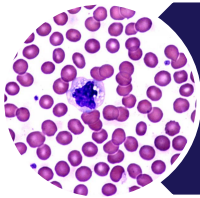
- Founded in 1925, ATCC is a non-profit organization with headquarters in Manassas, VA
- World's premiere biological materials resource and standards development organization
- ATCC collaborates with and supports the scientific community with industry-standard products and innovative solutions
- Broad range of biomaterials
  - Continuous cell lines, iPSCs, primary cells, and hTERT immortalized cells
  - Bacteria, fungi, yeasts, protists, and viruses
  - Microbial and tumor cell panels
  - Genomic and synthetic nucleic acids
  - Media, sera, and reagents



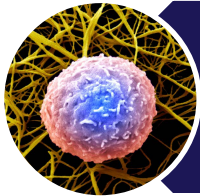
# Outline



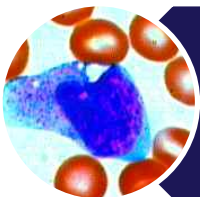
Background



CD34+ hematopoietic stem & progenitor cells



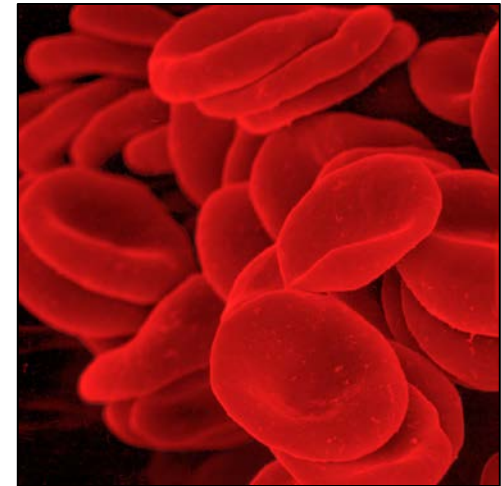
Mononuclear cells



CD14+ monocytes

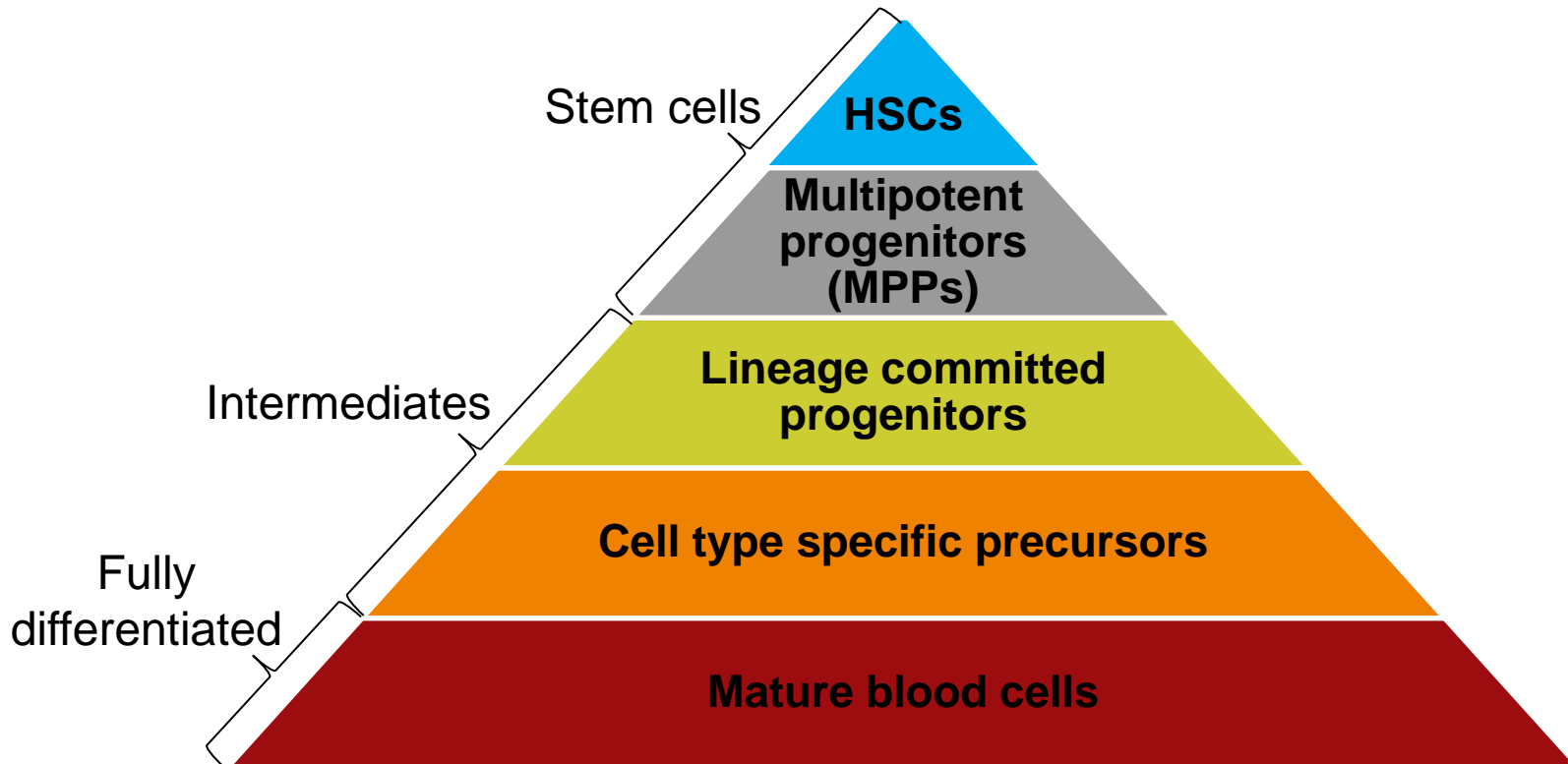
# Blood cells

- Blood is comprised of a heterogeneous population of specialized cells
- Three major types
  - **Leukocytes:** Acquired and innate immunity
  - **Erythrocytes:** Gas transport
  - **Thrombocytes:** Wound healing
- Millions of blood cells are generated every second, approximately 1 trillion every day
- Hematopoiesis:
  - Dynamic process
  - Varies in response to injury or infection
  - Individual cells may live for hours to years
- Blood cells arise from hematopoietic stem cells (HSCs)

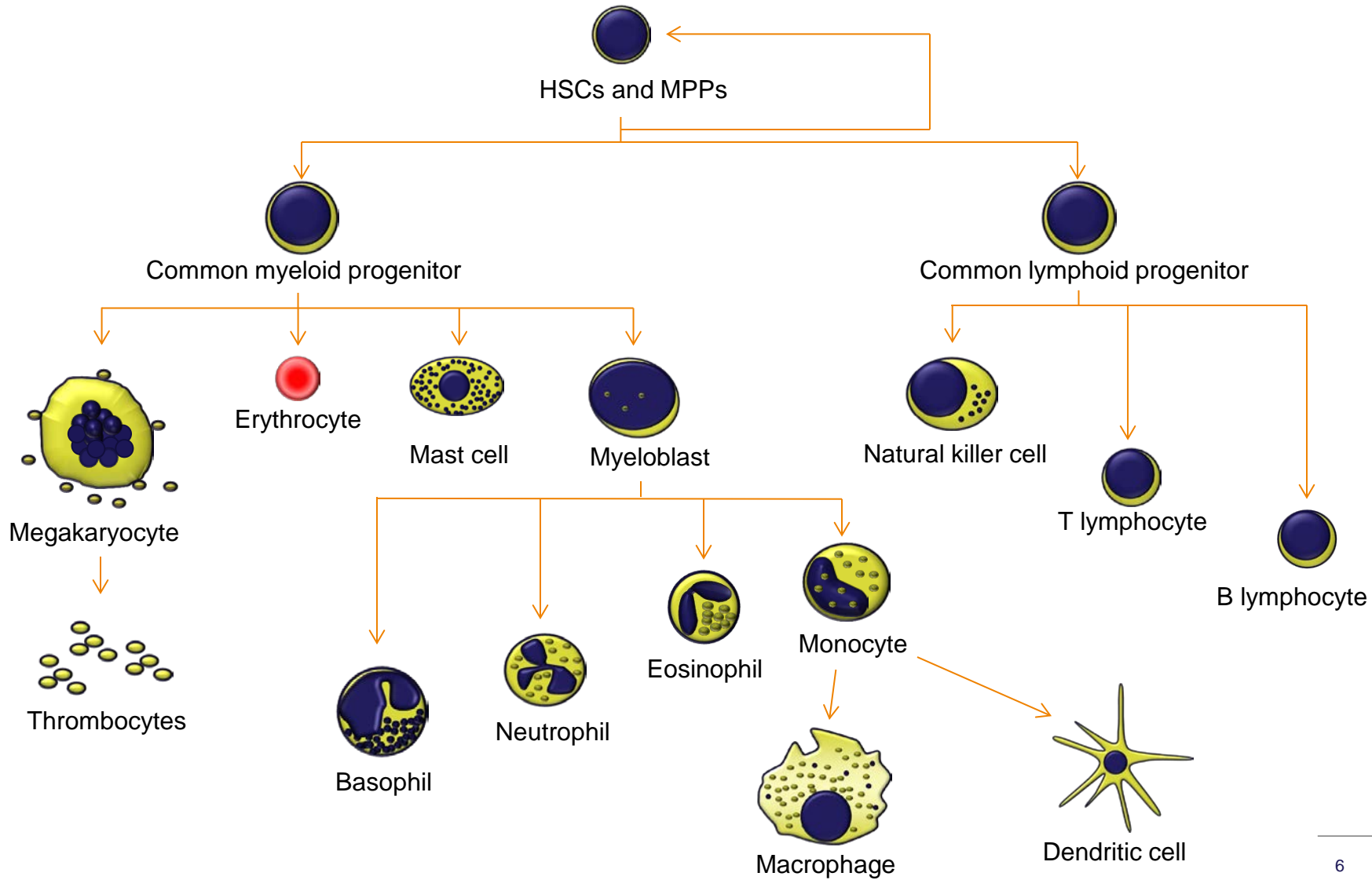


Erythrocytes

# Hematopoiesis: A hierarchal system

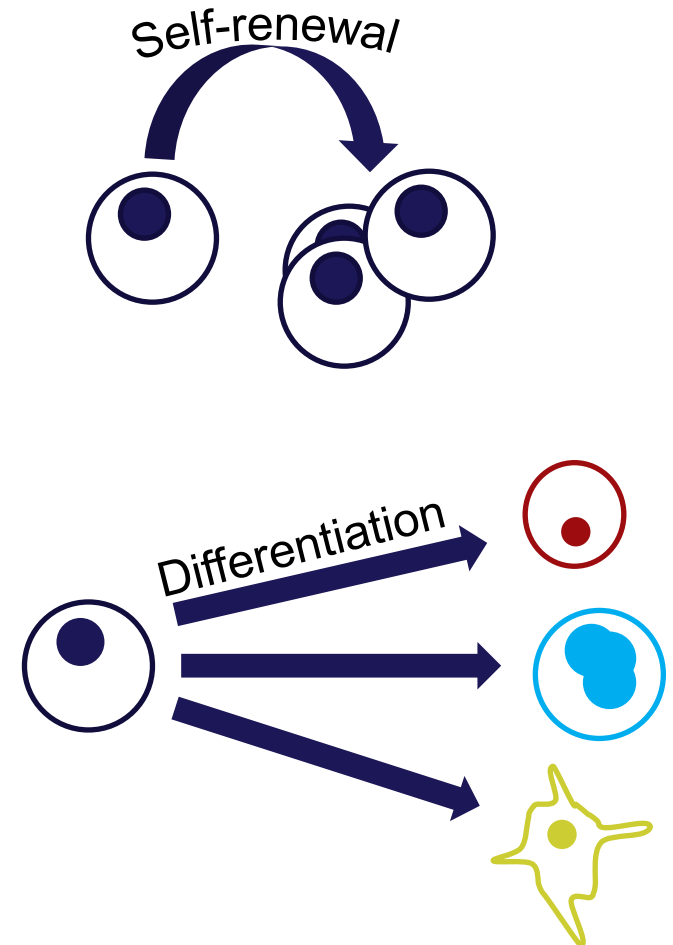


# Hematopoietic cell fate and lineage

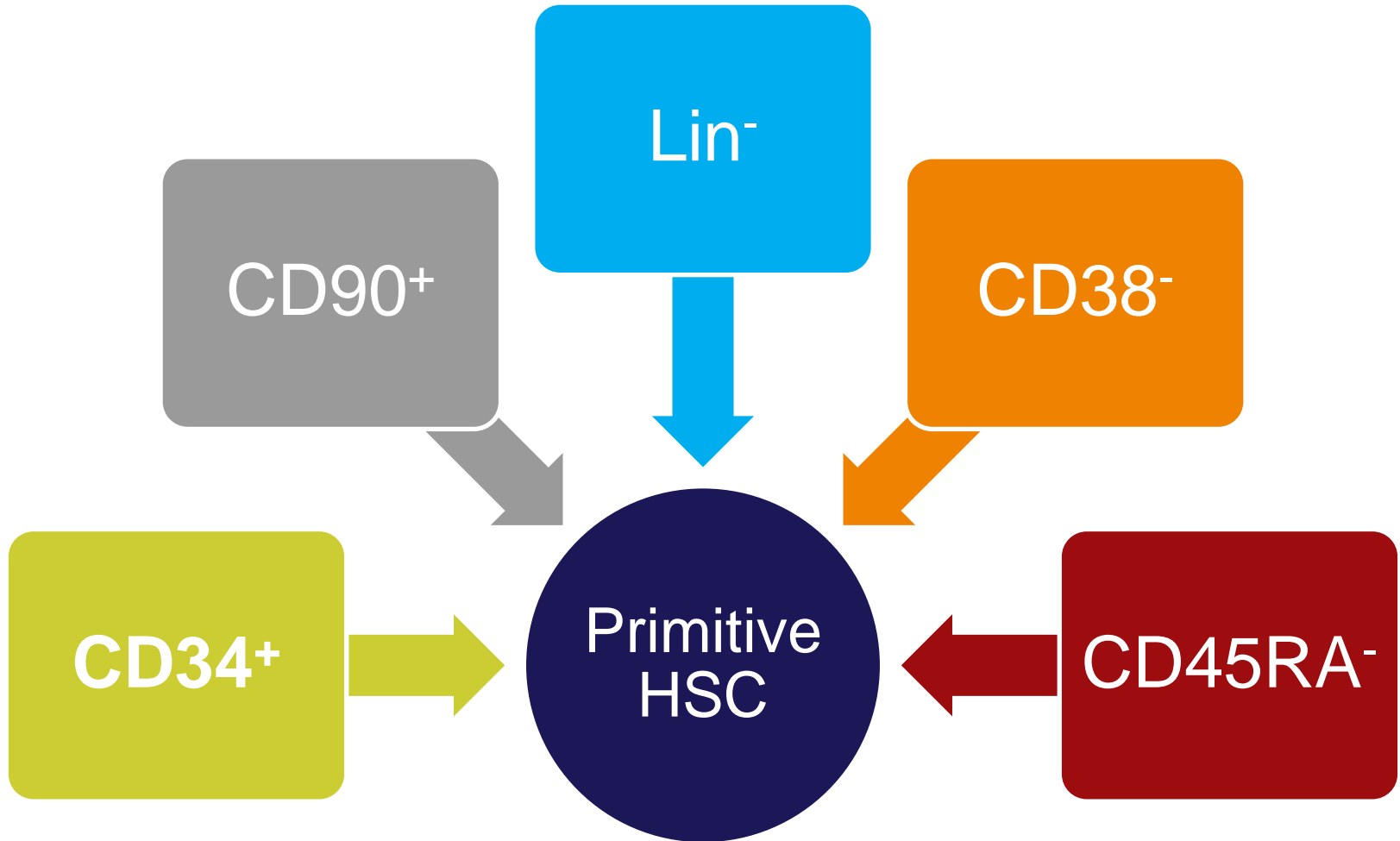


# Hematopoietic stem cells: Characteristics

- Hematopoietic stem cells (HSCs) are multipotent cells that give rise to all other blood cells
- HSCs reside primary in bone marrow (major site of hematopoiesis in adults)
- True hematopoietic stem cells are rare
- True hematopoietic stem cells can only be confirmed via *in vivo* functional assays

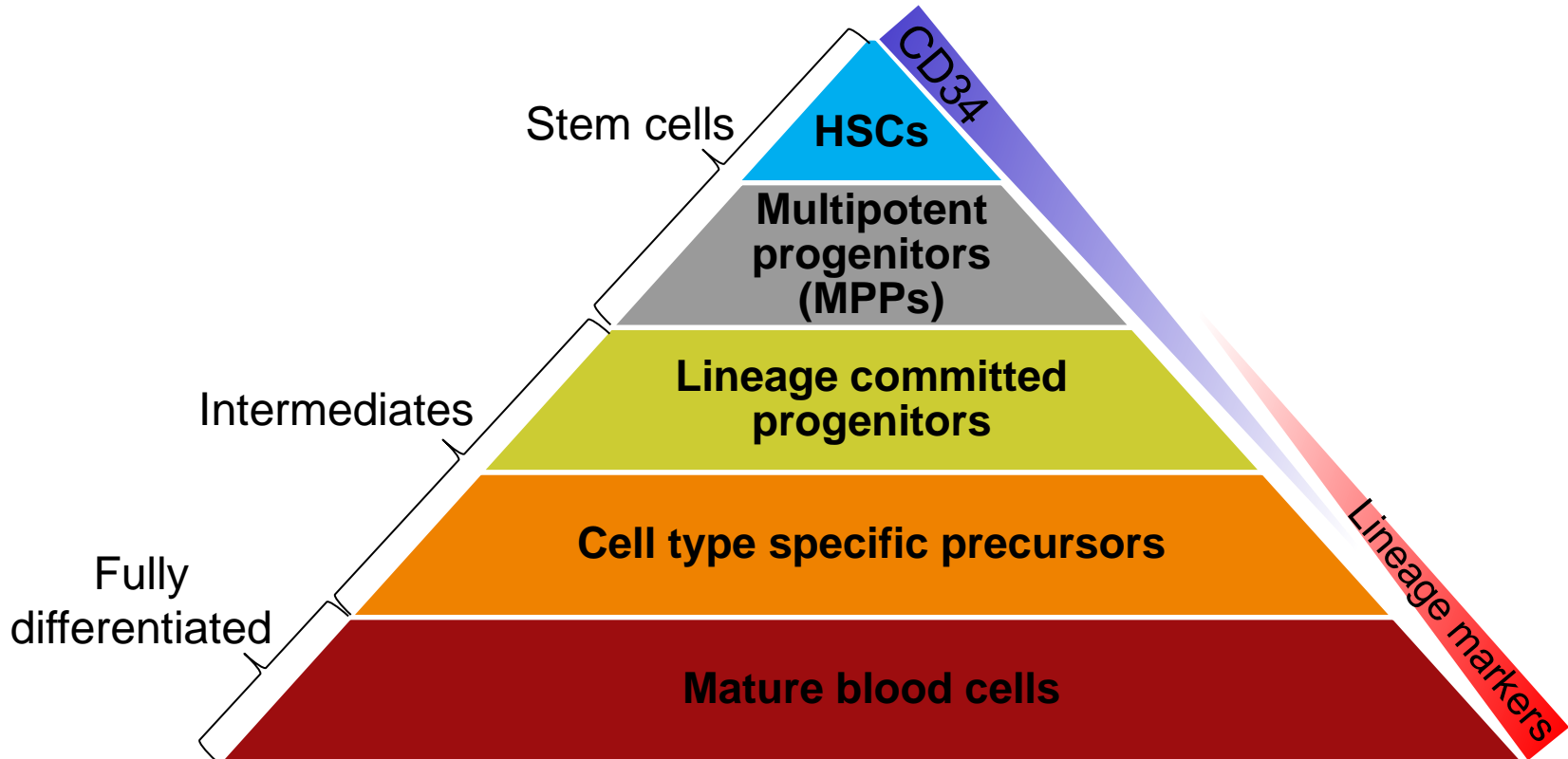


# Hematopoietic stem cells: Markers

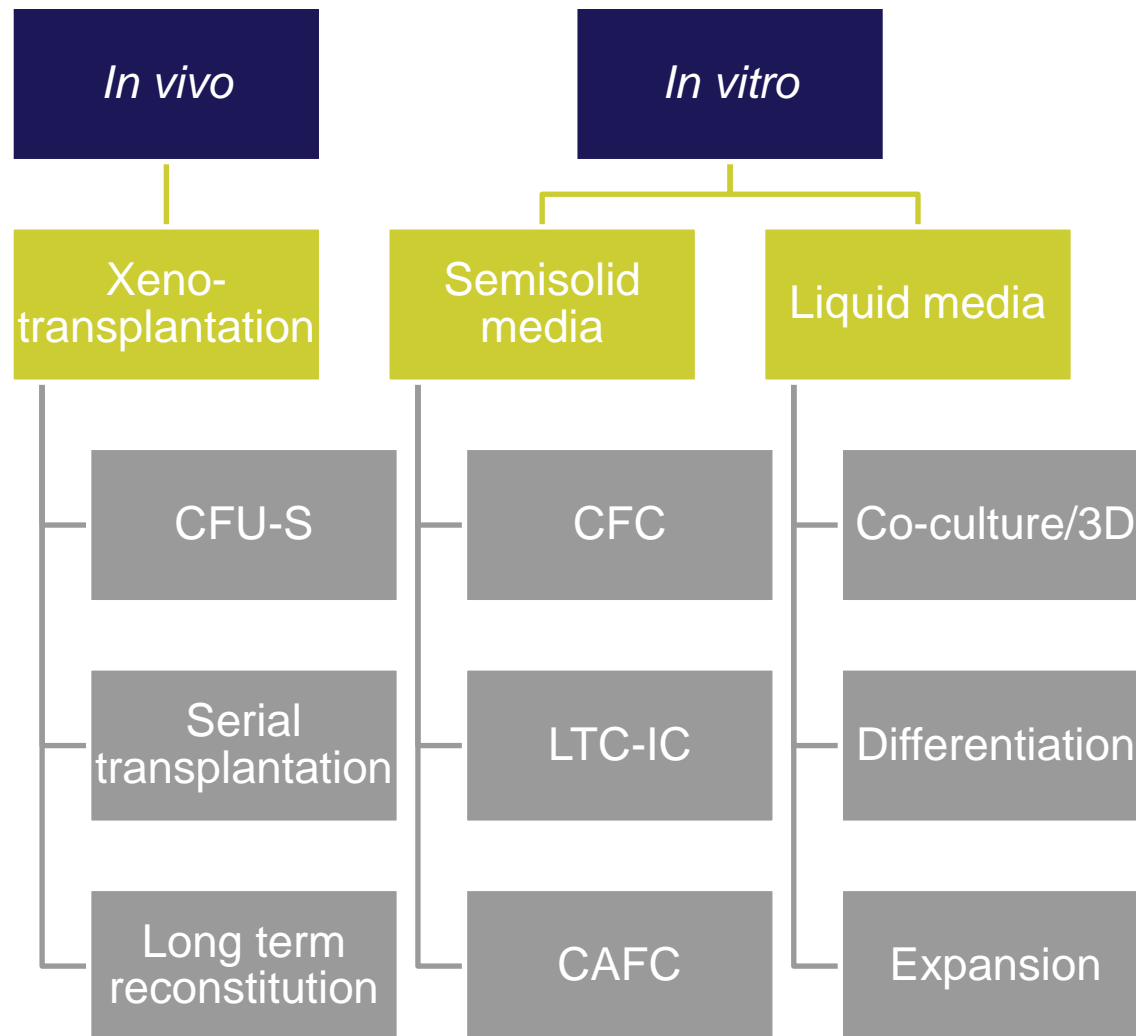




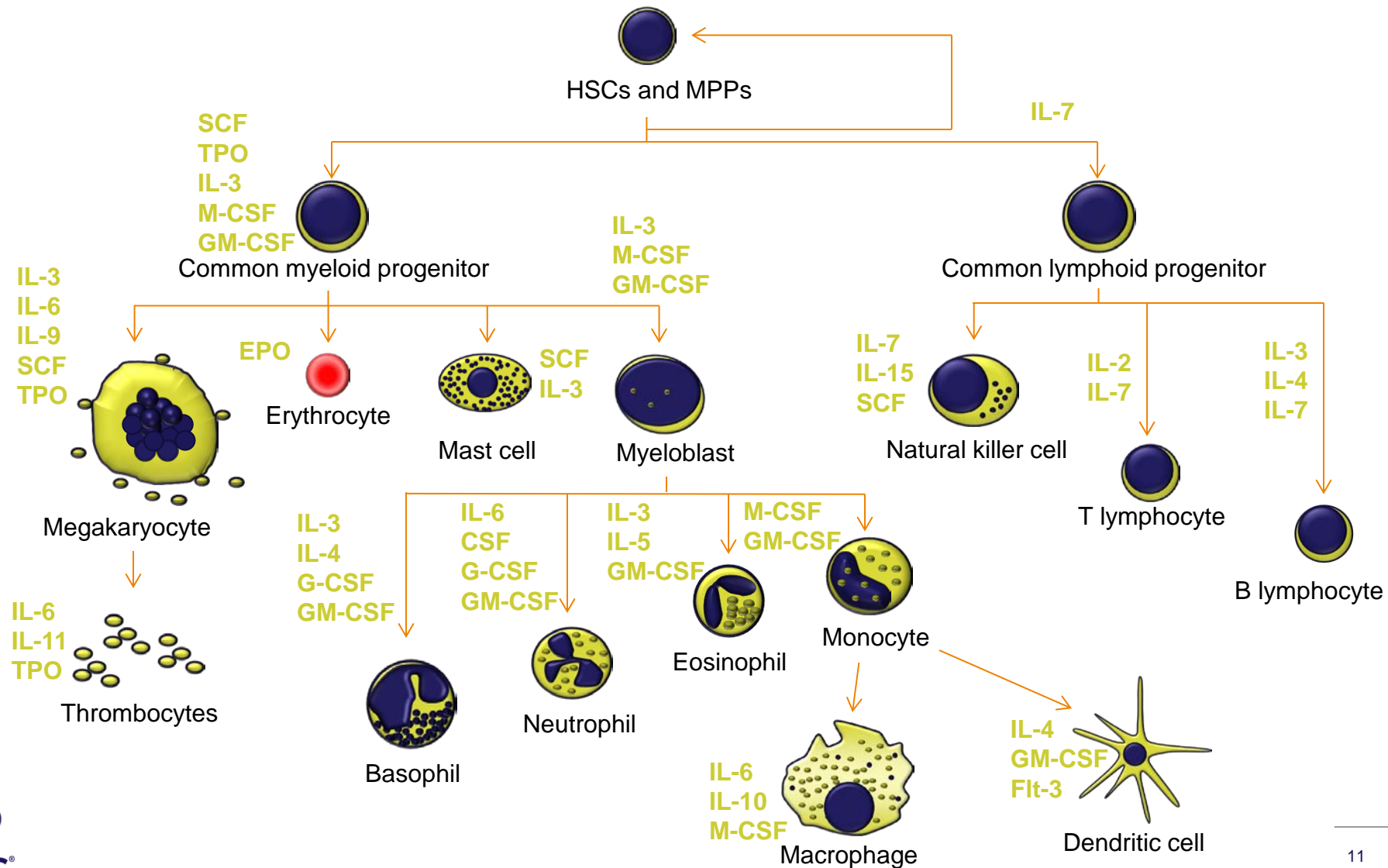
# CD34+ cells are a mixed population of stem and progenitor cells



# Assays to study hematopoietic stem and progenitor cells



# Cytokines influence cell fate and lineage *in-vitro*

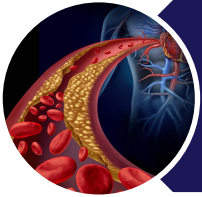




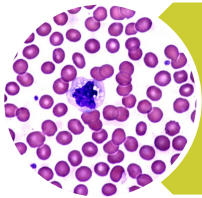
# Blood and hematopoiesis summary

- Blood is a heterogeneous tissue - its replacement *in vivo* is a complex process
- HSCs are responsible for the generation of all other blood cell types
- Recent advances allow for the identification and isolation of human HSCs as well as other blood cell types
- This process can be studied *in vitro* through the use of lineage directed differentiation of HSPCs

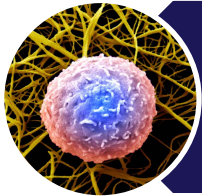
# Outline



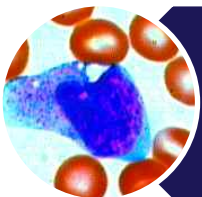
Background



CD34+ hematopoietic stem & progenitor cells



Mononuclear cells



CD14+ monocytes



# Primary CD34+ HSPCs

## Applications

- *Ex vivo* expansion and differentiation
- Stem cell markers
- Gene transfer
- Cytokine and chemokine expression and regulation
- Receptor expression

## Key research areas

- Safely and efficiently expand HSCs *in vitro* or *in vivo* for transplantation
- Immune response
  - Graft-versus-host disease/transplant rejection
- Cancer
- Cell-fate determination

# Mature lymphocyte generation from CD34+ HSPCs on a 3D matrix

## A Simple Model System Enabling Human CD34+ Cells to Undertake Differentiation Towards T Cells

Antonio Lapenna<sup>1,2\*</sup>, Christopher B-Lynch<sup>1</sup>, Chrysa Kapeni<sup>1</sup>, Richard Aspinall<sup>1</sup>

<sup>1</sup> Regenerative Medicine Group, Cranfield Health, Cranfield University, Cranfield, United Kingdom, <sup>2</sup> Department of Immunology and Cancer Research, Faculty of Medicine, The Hebrew University of Jerusalem, Jerusalem, Israel

### Abstract

**Background:** Channelling the development of haematopoietic progenitor cells into T lymphocytes is dependent upon a series of extrinsic prompts whose temporal and spatial sequence is critical for a productive outcome. Simple models of human progenitor cells development depend in the main on the use of xenogenic systems which may provide some limitations to development.

**Methods and Findings:** Here we provide evidence that a simple model system which utilises both human keratinocyte and fibroblast cell lines arrayed on a synthetic tantalum coated matrix provides a permissive environment for the development of human CD34+ haematopoietic cells into mature CD4+ or CD8+ T lymphocytes in the presence of Interleukin 7 (IL-7), Interleukin 15 (IL-15) and the Fms-like tyrosine kinase 3 ligand (Flt-3L). This system was used to compare the ability of CD34+ cells to produce mature thymocytes and showed that whilst these cells derived from cord blood were able to productively differentiate into thymocytes the system was not permissive for the development of CD34+ cells from adult peripheral blood.

**Conclusions/Significance:** Our study provides direct evidence for the capacity of human cord blood CD34+ cells to differentiate along the T lineage in a simple human model system. Productive commitment of the CD34+ cells to generate T cells was found to be dependent on a three-dimensional matrix which induced the up-regulation of the Notch delta-like ligand 4 (Dll-4) by epithelial cells.

Citation: Lapenna A, B-Lynch C, Kapeni C, Aspinall R (2013) A Simple Model System Enabling Human CD34+ Cells to Undertake Differentiation Towards T Cells. *PLoS ONE* 8(7): e69572. doi:10.1371/journal.pone.0069572

Editor: Zoran Ivanovic, French Blood Institute, France

Received April 05, 2013; Accepted June 14, 2013; Published July 23, 2013

Copyright: © 2013 Lapenna et al. This is an open-access article distributed under the terms of the Creative Commons Attribution License, which permits unrestricted use, distribution, and reproduction in any medium, provided the original author and source are credited.

Funding: This research was funded in part by Myrtle Peach Trust UK (Registered Charity No. 1048297); <http://www.mthertage.co.uk/InHu/peach.htm> and from Cranfield University. The funders had no role in study design, data collection and analysis, decision to publish, or preparation of the manuscript.

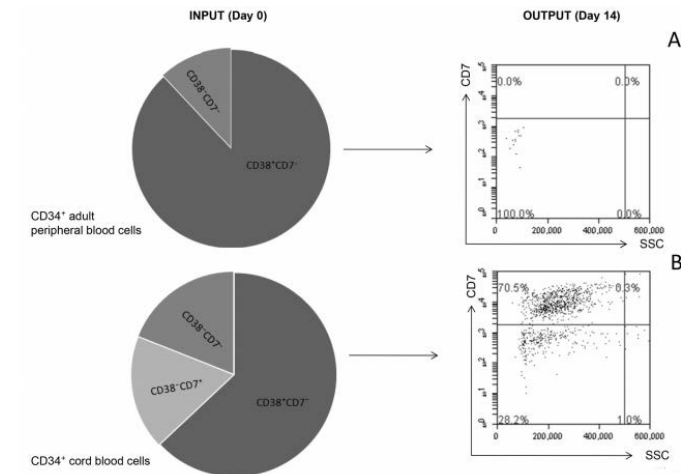
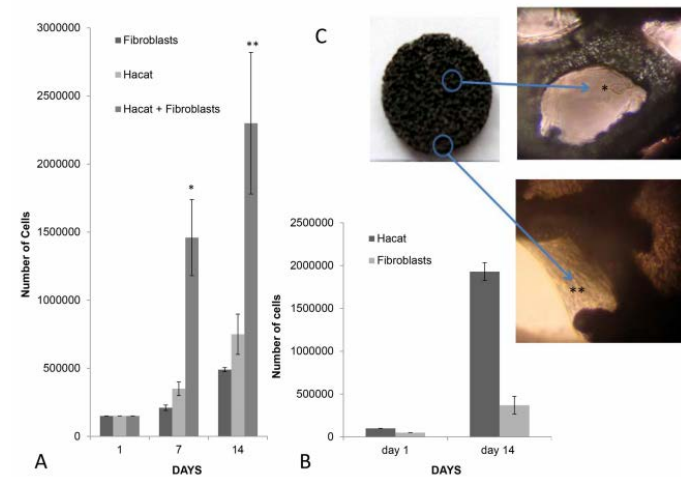
Competing Interests: The authors have declared that no competing interests exist.

\* E-mail: antoniolapenna@hotmail.com

### Introduction

The generation of T cells from haematopoietic progenitor cells requires the positioning of progenitors within the thymus where a unique environment induces supports and directs their differentiation [1]. Production of new thymocytes continues throughout life and because the progenitors cannot be stored and maintained indefinitely within the thymus, continuation of production requires seeding of the thymus with these cells. Analysis of thymic output reveal that the rate of production of new T cells declines with age [2] and that as thymocyte production decreases so there is atrophy of the thymus. In broad terms thymic atrophy has been linked to deficits in

(FTOC) systems or allogeneic cell lines such as mouse bone marrow-derived OP9 cells expressing the Notch delta-like ligand 1 (OP9-DL1) [3–5]. But the experiments in human systems have proved more intractable. Analysis of the capacity of haematopoietic progenitor cell populations to produce T cells have proceeded but has been hampered, mainly through the use of xenogenic model systems which by their very nature are limited and associated with incomplete or inefficient differentiation of the progenitors [5]. Some studies of thymic stromal cells have indicated changes with age in the thymic environment cell type composition and expression profile but these data were limited by the lack of culture methods which could effectively model the thymic architecture *in vitro* [6].

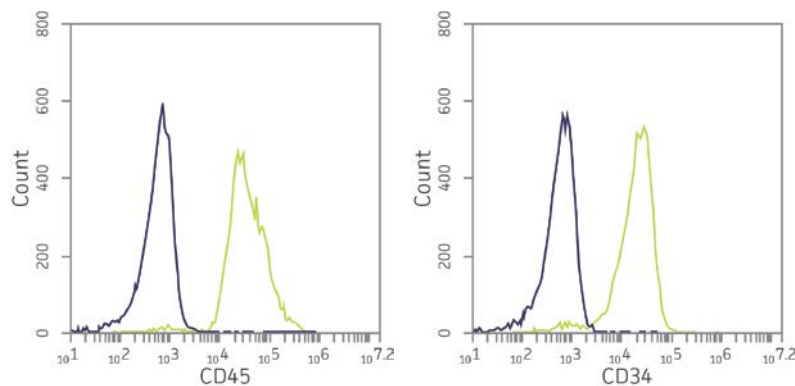


Lapenna A, et al. *PLoS one* 8.7, 2013: e69572.

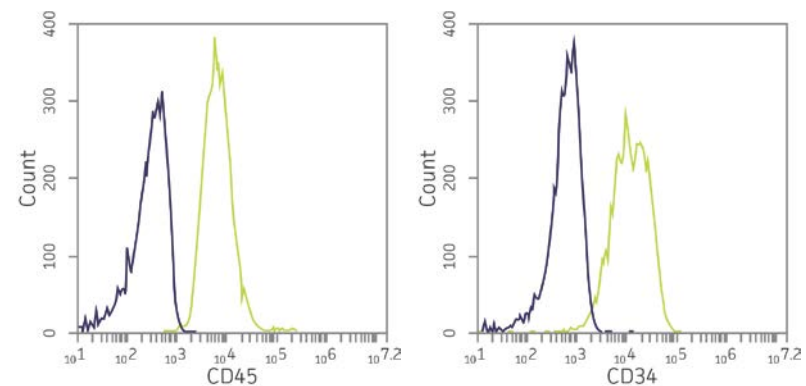
# ATCC primary CD34+ HSPCs

- Healthy human volunteer donors; IRB-approved informed consent
- Adult, non-pregnant (excluding cord blood)
- Cryopreserved at P0; Purity:  $\geq 90\%$  CD34+
- Age, gender, ethnicity, and blood type on CoA

| ATCC® No.   | Tissue      | Type  | Size                   |
|-------------|-------------|---|------------------------|
| PCS-800-012 | Bone marrow | Hematopoietic stem/progenitor cells (CD34+); Normal | $\geq 0.5 \times 10^6$ |
| PCS-800-014 | Cord blood  | Hematopoietic stem/progenitor cells (CD34+); Normal | $\geq 0.5 \times 10^6$ |



Bone marrow



Cord blood





# CD34+ HSPC lineage directed expansion and differentiation

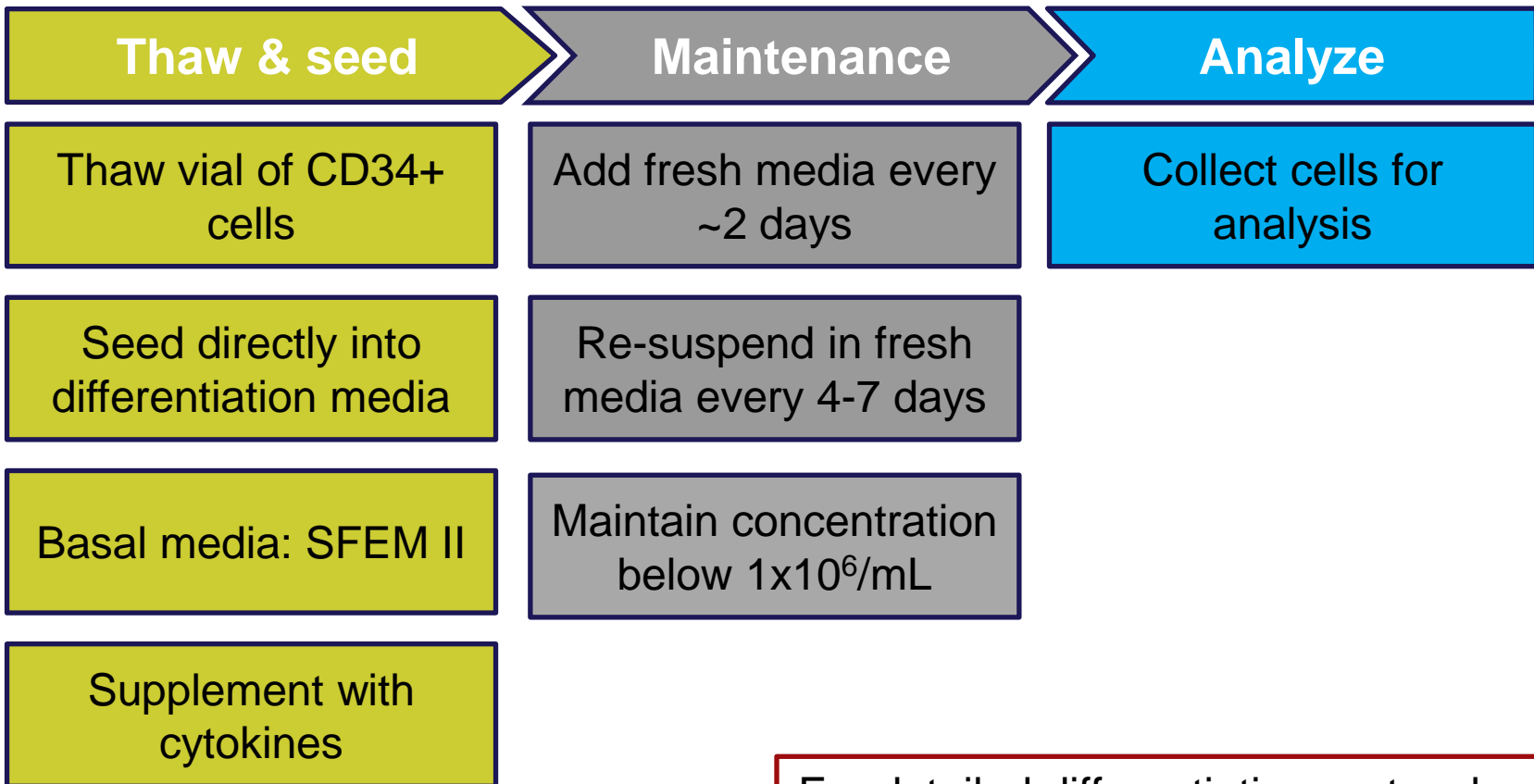
## Goals

- Demonstrate primary CD34+ HSPC capacity for lineage-directed expansion and differentiation *in vitro*
- Confirm multilineage differentiation (erythrocyte, megakaryocyte, and pan-myeloid)
- Compare CD34+ differentiation efficiency from multiple tissues
- Utilize a method amenable to high throughput assays

## Methods

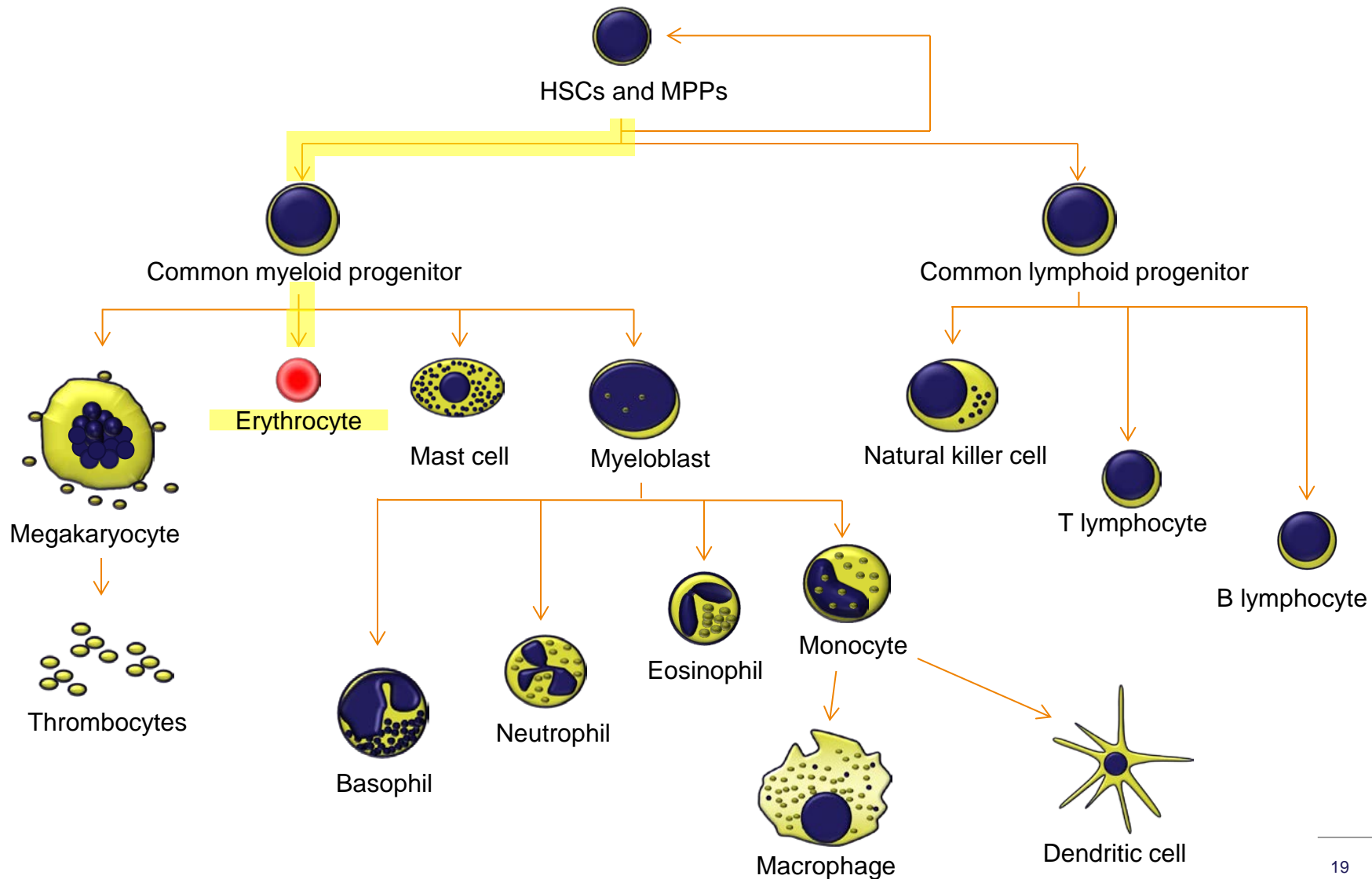
- Cryopreserved CD34+ primary cells from bone marrow and cord blood
- Serum-free liquid culture
- Analysis of phenotype by surface marker expression
- Commercially available cytokine cocktails

# General differentiation protocol workflow



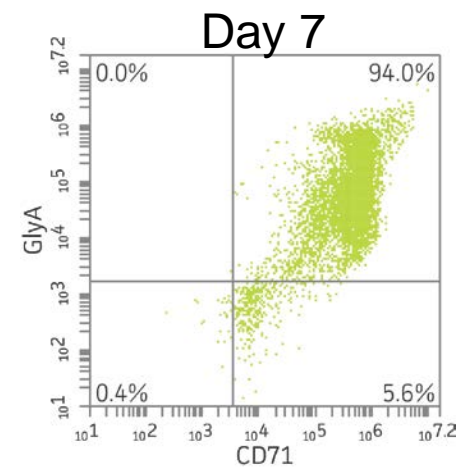
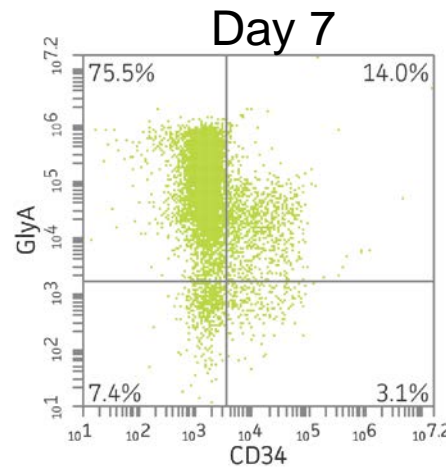
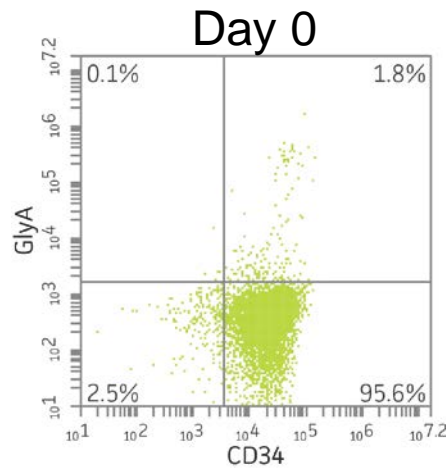
For detailed differentiation protocols see the ATCC website

# Erythroid differentiation and expansion

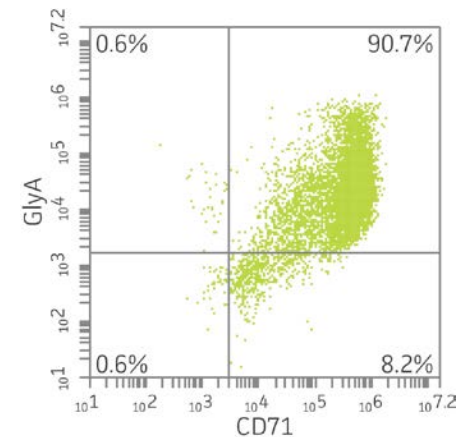
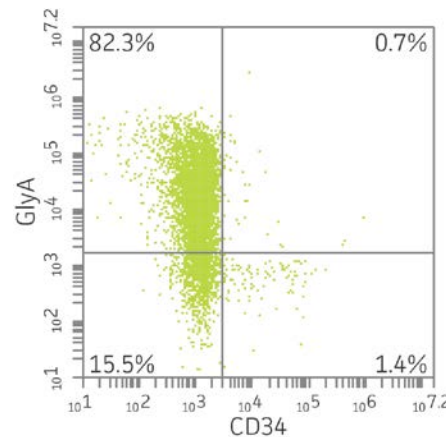
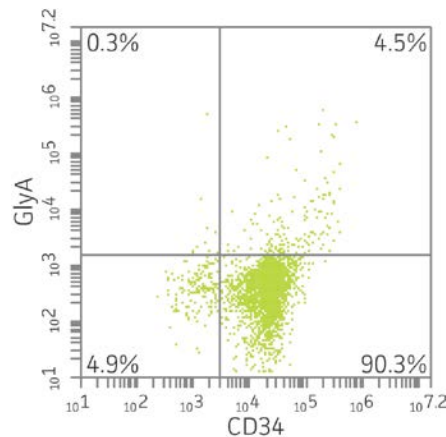


# Expression of erythroid lineage markers on differentiated BM and CB CD34+ cells

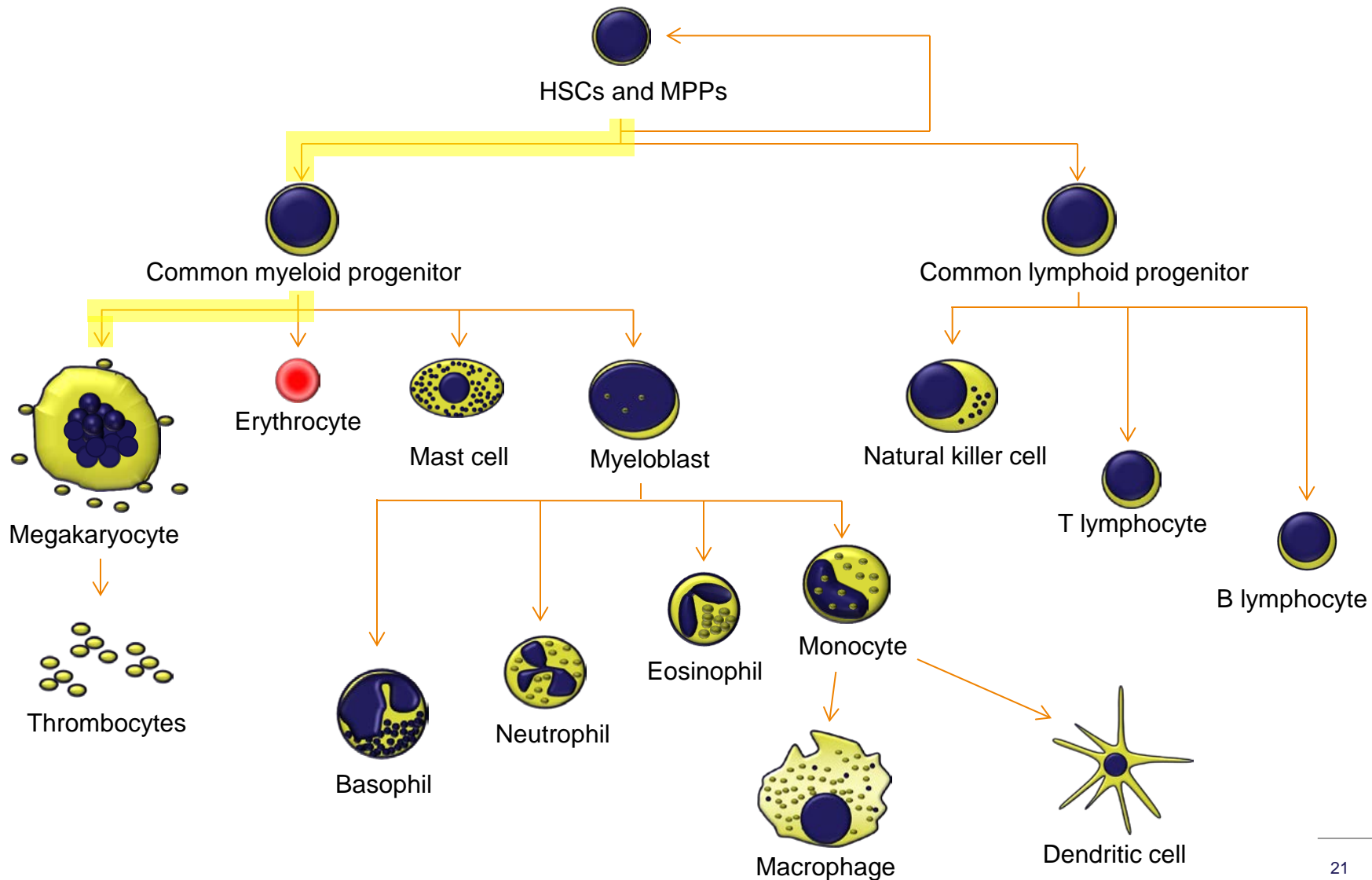
Bone Marrow  
CD34+ HSPCs



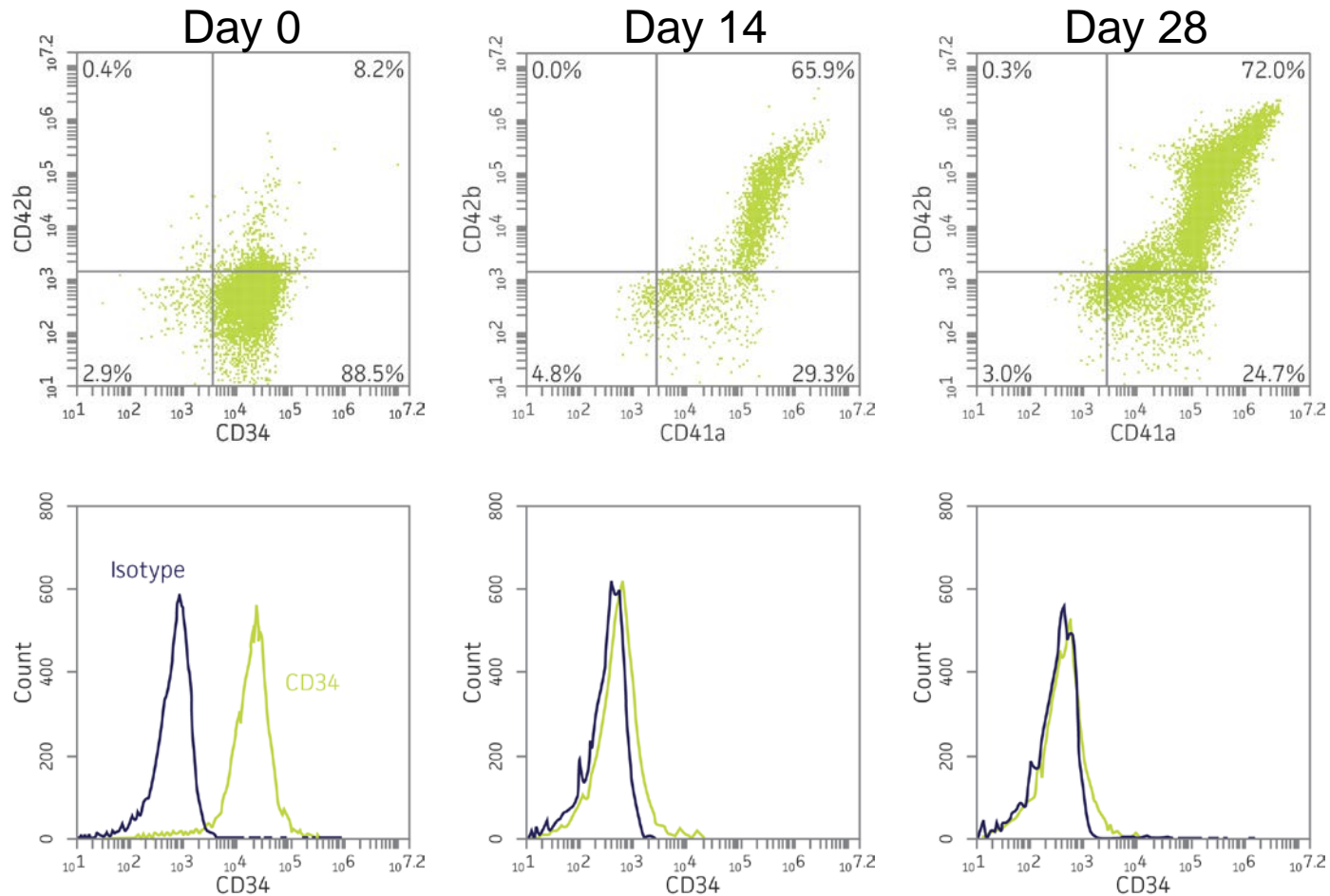
Cord Blood  
CD34+ HSPCs



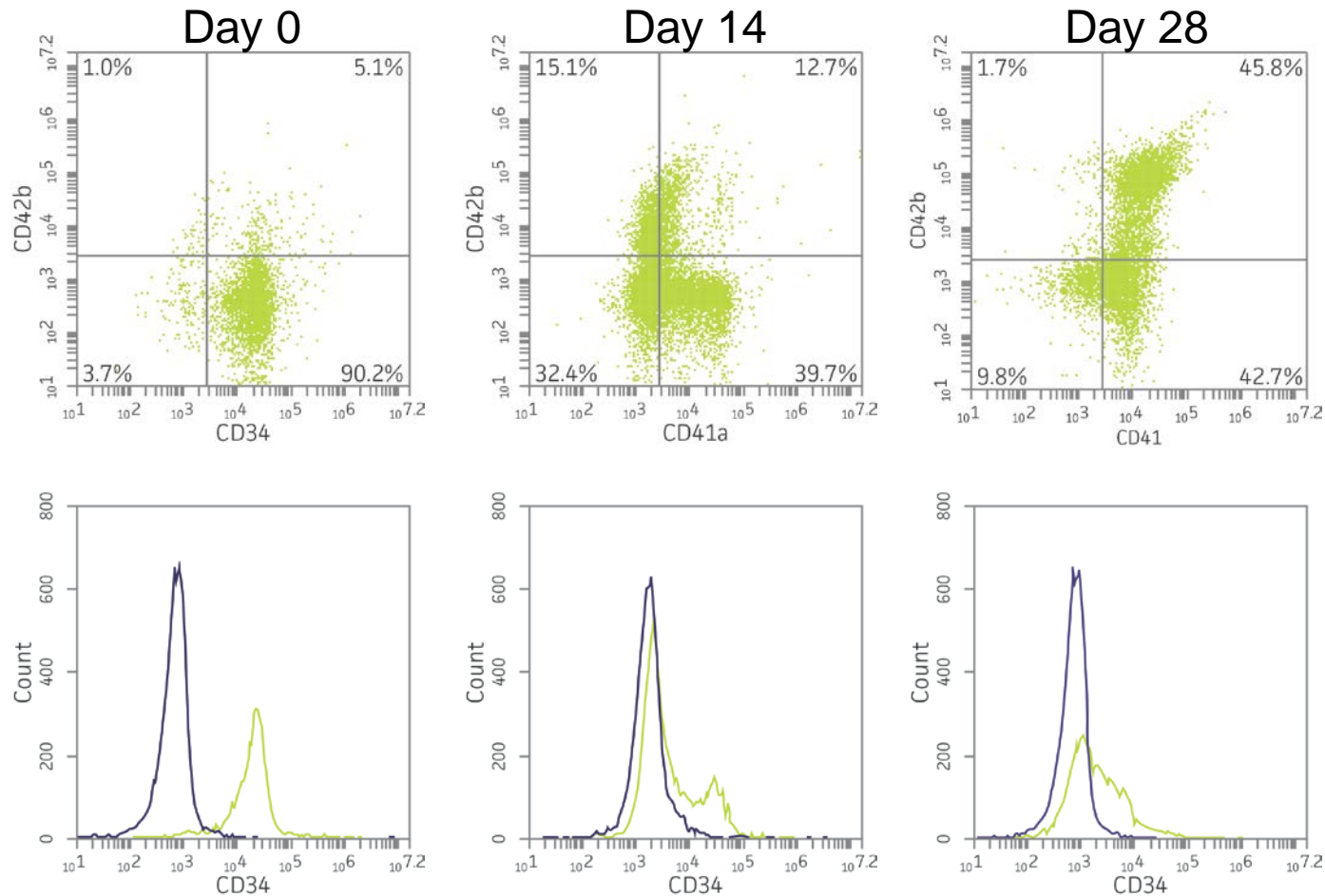
# Megakaryocyte differentiation and expansion



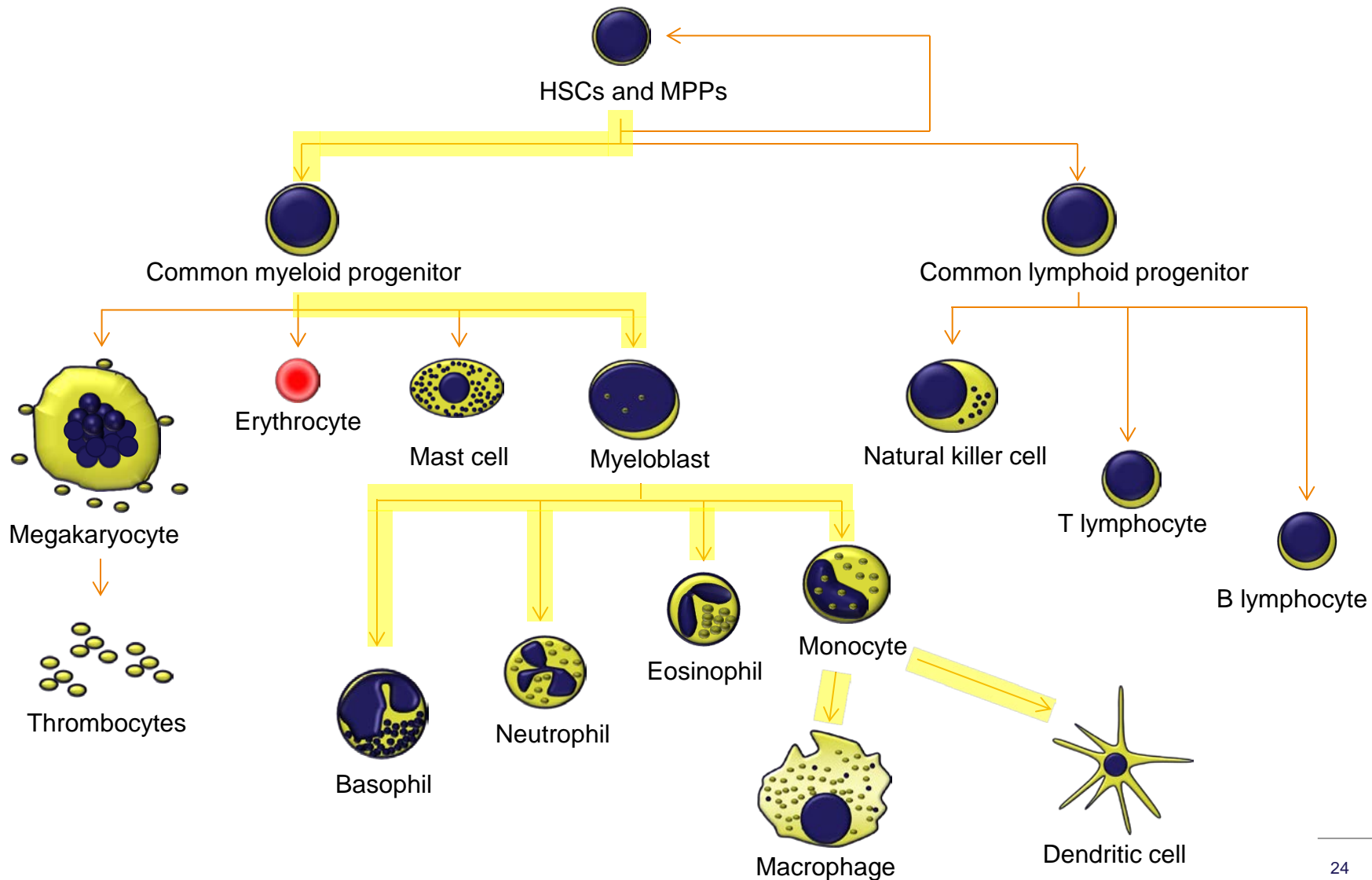
# Expression of megakaryocyte lineage markers on differentiated bone marrow CD34+ HPSCs



# Expression of megakaryocyte lineage markers on differentiated cord blood CD34+ HPSCs



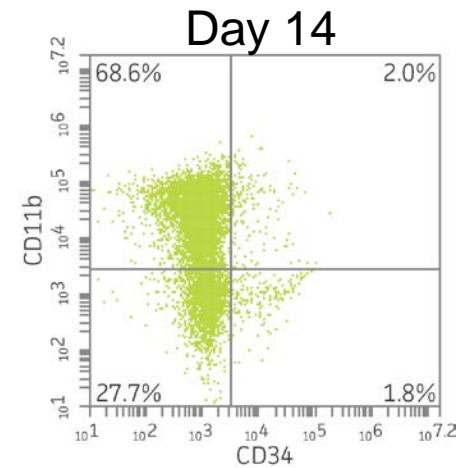
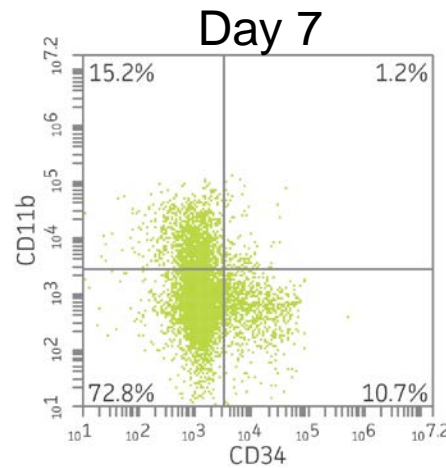
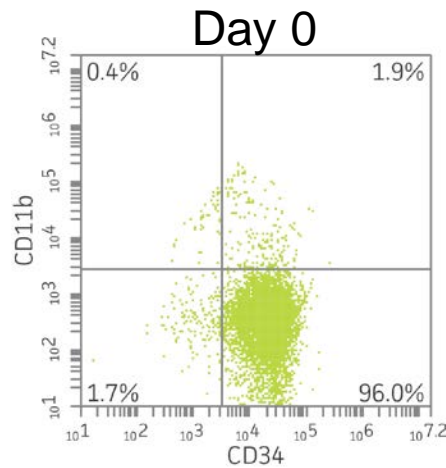
# Pan-myeloid differentiation and expansion



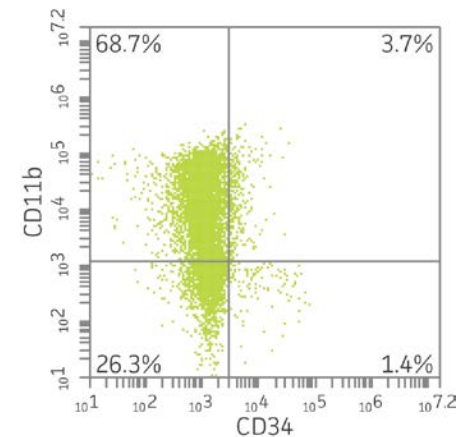
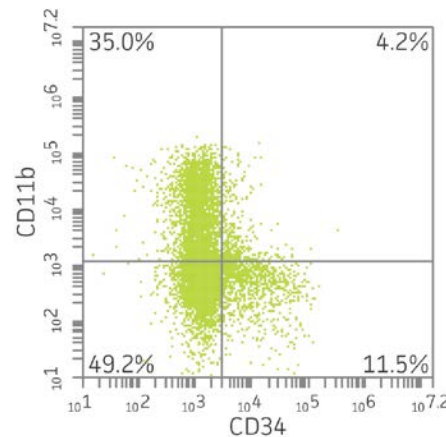
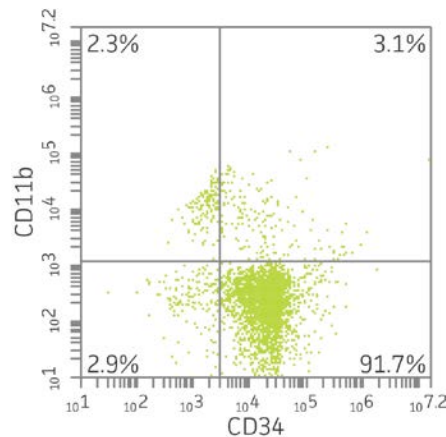


# Expression of pan-myeloid lineage markers on differentiated BM and CB CD34+ HPSCs

Bone Marrow  
CD34+ HSPCs

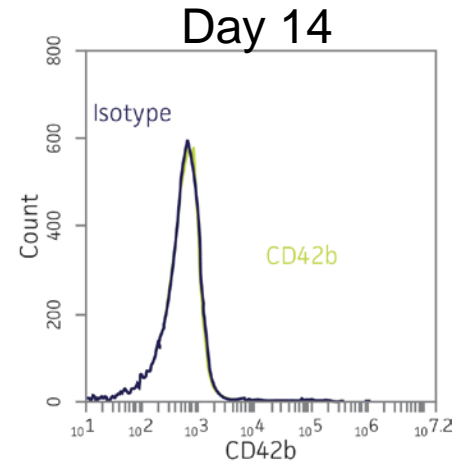
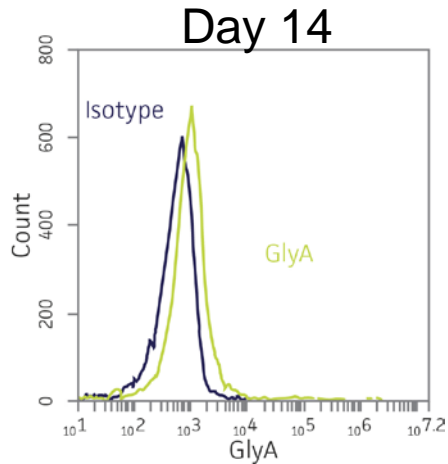


Cord Blood  
CD34+ HSPCs

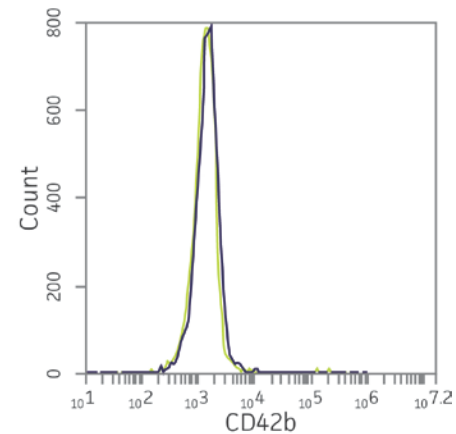
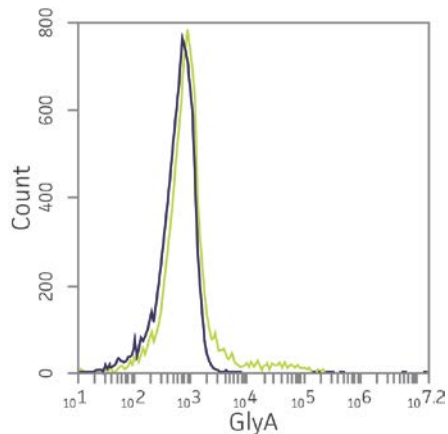


# Specificity of pan-myeloid-directed differentiation of CD34+ HPSCs

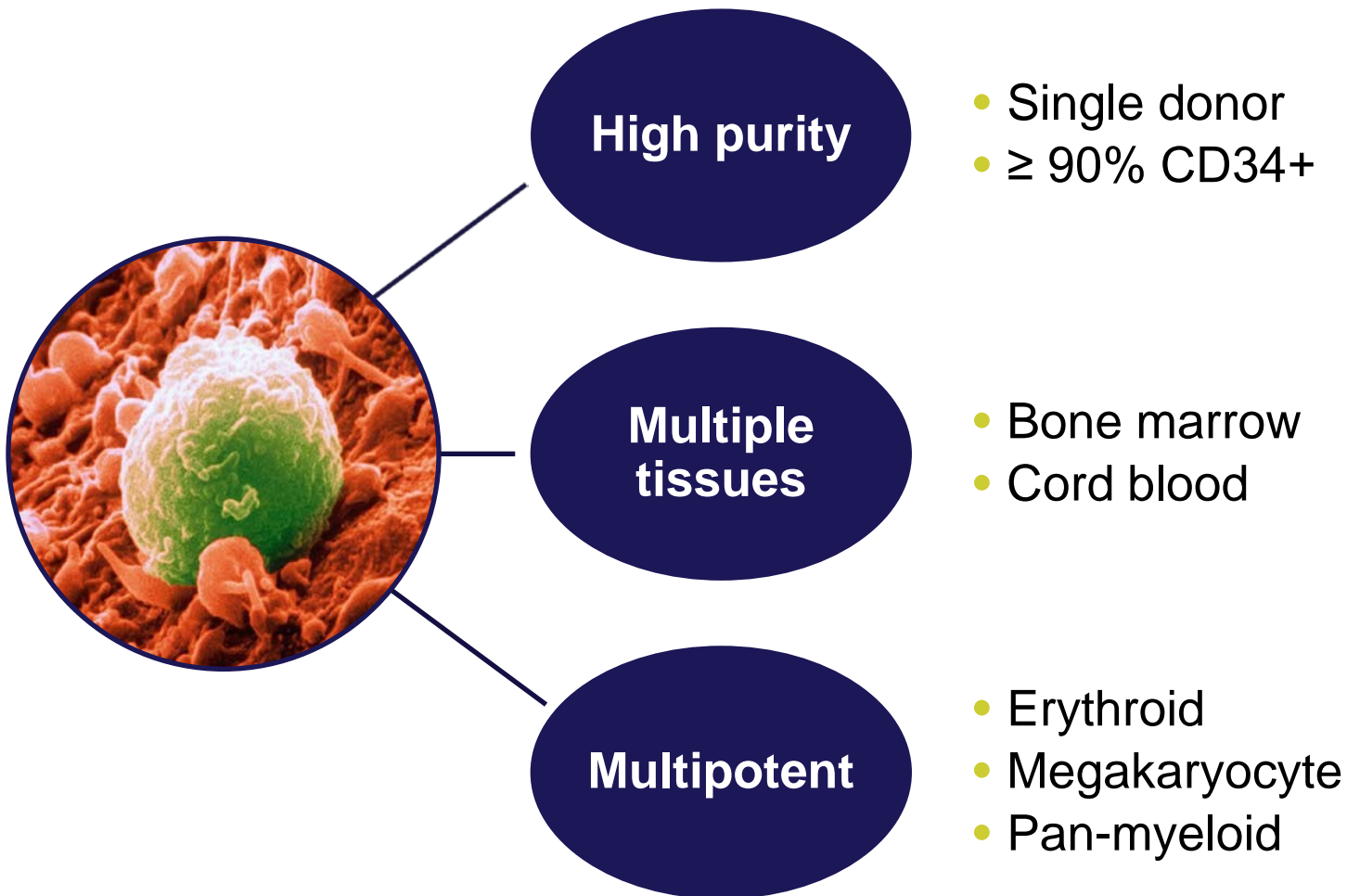
Bone Marrow  
CD34+ HSPCs



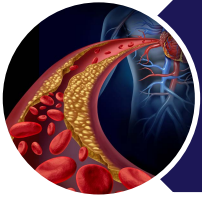
Cord Blood  
CD34+ HSPCs



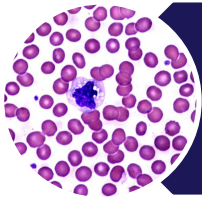
# ATCC primary CD34+ HSPCs: Summary



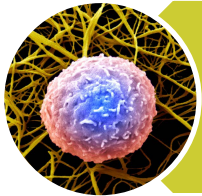
# Outline



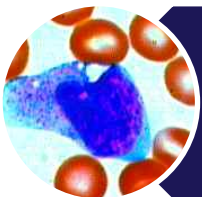
Background



CD34+ hematopoietic stem & progenitor cells

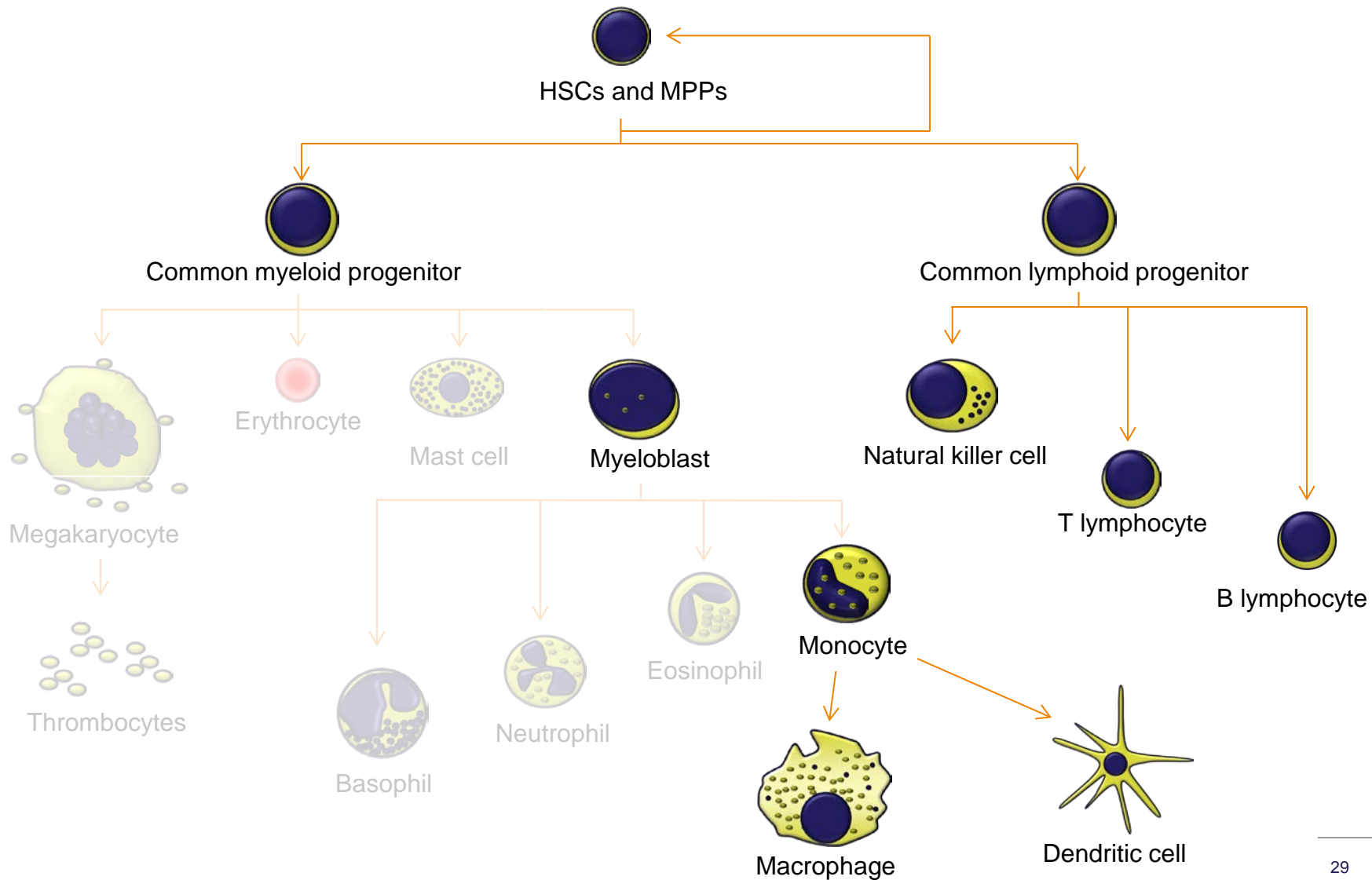


Mononuclear cells



CD14+ monocytes

# Mononuclear Cells



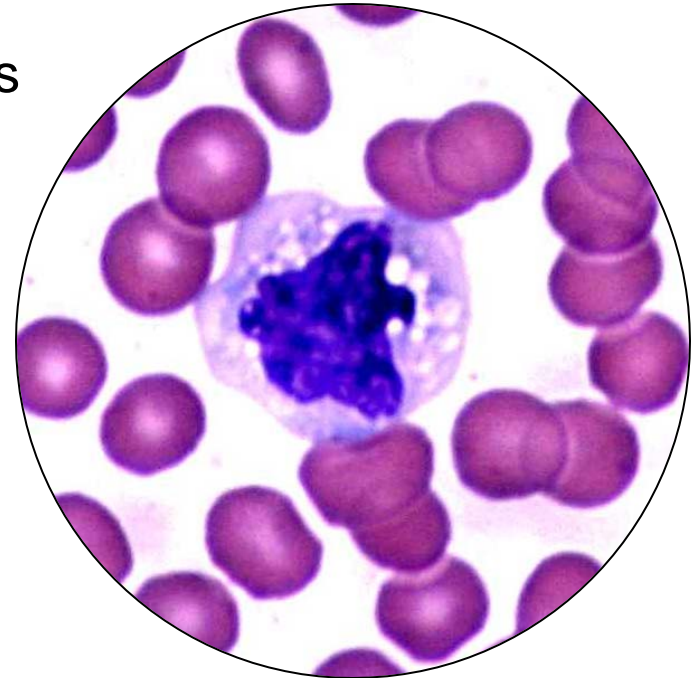
# Primary mononuclear cells

## Applications

- Isolation and study of cell subpopulations
- Molecular expression profiling

## Key research areas

- Infectious disease
- Blood pathologies
- Immunology
- Vaccine development
- Toxicology
- Regenerative medicine

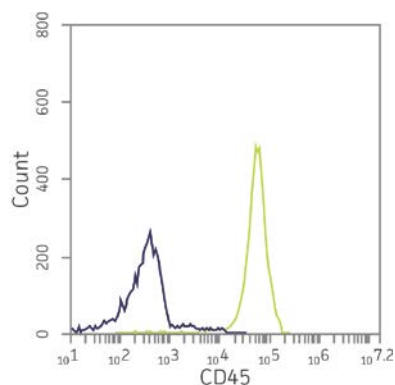


Monocyte and erythrocytes

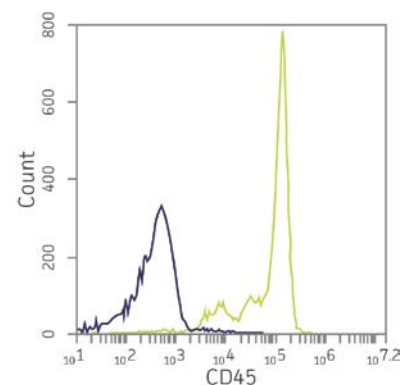
# Primary mononuclear cells

- Healthy human volunteer donors; IRB-approved informed consent
- Adult, non-pregnant
- Cryopreserved at P0; Purity:  $\geq 90\%$  CD45+
- Age, gender, ethnicity, and blood type on CoA

| ATCC® No.   | Tissue           | Type                                     | Size                  |
|-------------|------------------|--|-----------------------|
| PCS-800-011 | Peripheral blood | Mononuclear cells (PBMCs); Normal, Human | $\geq 25 \times 10^6$ |
| PCS-800-013 | Bone marrow      | Mononuclear cells (BMMCs); Normal, Human | $\geq 25 \times 10^6$ |



Peripheral blood mononuclear cells



Bone marrow mononuclear cells

# Primary mononuclear cells

## Reported on CoA (lot specific)


- Specific marker expression

### Peripheral Blood

- CD45+ (%)
- CD3+ (%)
- CD8+ (%)
- CD14+ (%)
- CD19+ (%)
- CD56+ (%)

### Bone Marrow

- CD45+ (%)
- CD3+ (%)
- CD8+ (%)
- CD14+ (%)
- CD19+ (%)
- CD34+ (%)
- CD56+ (%)



**CERTIFICATE OF ANALYSIS**

---

**ATCC® Number:** PCS-800-013™  
**Lot Number:**

**Name:** Primary Bone Marrow Mononuclear Cells, Normal, Human  
**Description:** Mononuclear Cells  
**Species:** Human (*Homo sapiens*)  
**Source:** Human Bone Marrow  
**Age:** 44 Years  
**Gender:** Male  
**Ethnicity:** Hispanic  
**Blood Type:** A Pos  
**Volume/Ampule:** Approximately 1 mL  
**Product Format:** Cells cryopreserved in the appropriate cryopreservation medium  
**Expiration Date:** Not applicable  
**Storage Conditions:** Vapor phase of liquid nitrogen

| Test / Method   | Specification   | Result   |
|---|---|--|
| Average viable cells/ampule   | ≥ 2.5 x 10 <sup>7</sup> (25 million) viable cells/ampule  | 2.993 x 10 <sup>7</sup> viable cells/ampule  |
| Post-freeze viability   | ≥ 70%   | 99.88%   |
| Human pathogenic virus testing for HIV (VI), HepB, HepC, and HTLV (VII) | Negative  | HIV (VI) – Negative<br>HepB – Negative<br>HepC – Negative<br>HTLV (VII) – Negative   |
| Characterization / cell specific staining (by flow cytometry)           | CD45+: Positive (≥ 70%)<br>CD3+: Report results<br>CD4+: Report results<br>CD8+: Report results<br>CD14+: Report results<br>CD19+: Report results<br>CD34+: Report results<br>CD56+: Report results | CD45+: 96.25%<br>CD3+: 53.80%<br>CD4+: 44.77%<br>CD8+: 22.27%<br>CD14+: 9.28%<br>CD19+: 10.98%<br>CD34+: 6.15%<br>CD56+: 7.40% |

ATCC (American Type Culture Collection)  
 P.O. Box 1549  
 Manassas, VA 20108 USA  
[www.atcc.org](http://www.atcc.org)

800-838-8197 or 703-365-2700  
 Fax: 703-365-2750  
 E-mail: [tech@atcc.org](mailto:tech@atcc.org)  
 or contact your local distributor

- Page 1 of 2 -



# Non-viral method increases natural killer cells' anti-cancer cell cytotoxicity

## Enhanced Cytotoxicity of Natural Killer Cells following the Acquisition of Chimeric Antigen Receptors through Trogocytosis

Fu-Nan Cho<sup>1,2</sup>, Tsung-Hsien Chang<sup>2,3</sup>, Chih-Wen Shu<sup>2</sup>, Ming-Chin Ko<sup>2</sup>, Shuen-Kuei Liao<sup>4</sup>, Kang-Hsi Wu<sup>5</sup>, Ming-Sun Yu<sup>6</sup>, Shyh-Jer Lin<sup>6</sup>, Ying-Chung Hong<sup>6</sup>, Chien-Hsun Chen<sup>7</sup>, Chien-Hui Hung<sup>8</sup>, Yu-Hsiang Chang<sup>3,4,9\*</sup>

**1** Department of Obstetrics and Gynecology, Kaohsiung Veterans General Hospital, Kaohsiung, Taiwan, **2** Department of Medical Education and Research, Kaohsiung Veterans General Hospital, Kaohsiung, Taiwan, **3** Department of Pediatrics, Kaohsiung Veterans General Hospital, Kaohsiung, Taiwan, **4** Graduate Institute of Cancer Biology and Drug Discovery and Center of Excellence for Cancer Research, Taipei Medical University, Taipei, Taiwan, **5** Department of Pediatrics, Children's Hospital and School of Chinese Medicine, China Medical University Hospital, Taichung, Taiwan, **6** Hematology-Oncology Section, Department of Medicine, Kaohsiung Veterans General Hospital, Kaohsiung, Taiwan, **7** Department of Radiation Oncology, Kaohsiung Veterans General Hospital, Kaohsiung, Taiwan, **8** Faculty of Medicine, National Yang-Ming University, Taipei, Taiwan, **9** Department of Nursing, Tajen University, Yungku Township, Pingtung County, Taiwan

### Abstract

Natural killer (NK) cells have the capacity to target tumors and are ideal candidates for immunotherapy. Viral vectors have been used to genetically modify *in vitro* expanded NK cells to express chimeric antigen receptors (CARs), which confer cytotoxicity against tumors. However, use of viral transduction methods raises the safety concern of viral integration into the NK cell genome. In this study, we used trogocytosis as a non-viral method to modify NK cells for immunotherapy. A K562 cell line expressing high levels of anti-CD19 CARs was generated as a donor cell to transfer the anti-CD19 CARs onto NK cells via trogocytosis. Anti-CD19 CAR expression was observed in expanded NK cells after these cells were co-cultured for one hour with freeze/thaw-treated donor cells expressing anti-CD19 CARs. Immunofluorescence analysis confirmed the localization of the anti-CD19 CARs on the NK cell surface. Acquisition of anti-CD19 CARs via trogocytosis enhanced NK cell-mediated cytotoxicity against the B-cell acute lymphoblastic leukemia (B-ALL) cell lines and primary B-ALL cells derived from patients. To our knowledge, this is the first report that describes the increased cytotoxicity of NK cells following the acquisition of CARs via trogocytosis. This novel strategy could be a potential valuable therapeutic approach for the treatment of B-cell tumors.

**Citation:** Cho F-N, Chang T-H, Shu C-W, Ko M-C, Liao S-K, et al. (2014) Enhanced Cytotoxicity of Natural Killer Cells following the Acquisition of Chimeric Antigen Receptors through Trogocytosis. *PLoS ONE* 9(10): e109352. doi:10.1371/journal.pone.0109352

**Editor:** Jacques Zimmer, Centre de Recherche Public de la Santé (ICP-Santé), Luxembourg

**Received:** April 25, 2014; **Accepted:** September 4, 2014; **Published:** October 14, 2014

**Copyright:** © 2014 Cho et al. This is an open-access article distributed under the terms of the Creative Commons Attribution License, which permits unrestricted use, distribution, and reproduction in any medium, provided the original author and source are credited.

**Data Availability:** The authors confirm that all data underlying the findings are fully available without restriction. All relevant data are within the paper.

**Funding:** This study was supported by grants from National Health Research Institutes (PS9808, [http://englab.nhi.org.tw/MS44L\\_WEB/InVivo01Action.do](http://englab.nhi.org.tw/MS44L_WEB/InVivo01Action.do)), and Kaohsiung Veterans General Hospital (VGHRS 102-104 and 103-123, <http://www.vghks.gov.tw/English/>) to YHC. This work is also supported in part by the Ministry of Health and Welfare of Taiwan (MOHW103-TD-B-111-011, <http://www.moh.gov.tw/EN/Ministry/index.aspx>) to SKL. The funders had no role in study design, data collection and analysis, decision to publish, or preparation of the manuscript.

**Competing Interests:** The authors have declared that no competing interests exist.

\* Email: yhschang@vghks.gov.tw

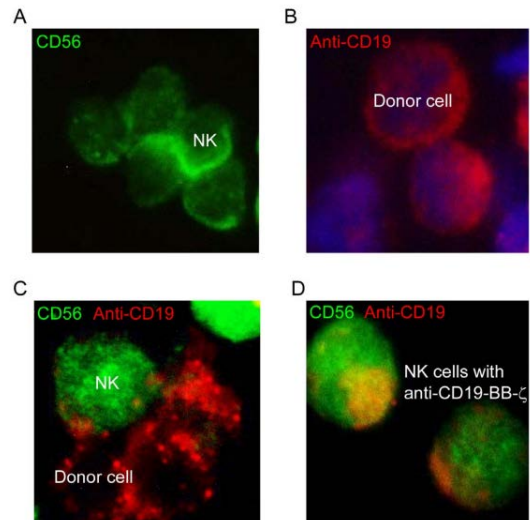
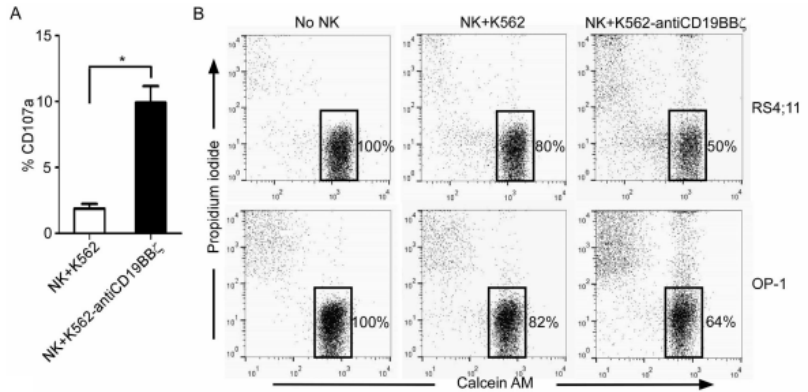
† These authors contributed equally to this work.

### Introduction

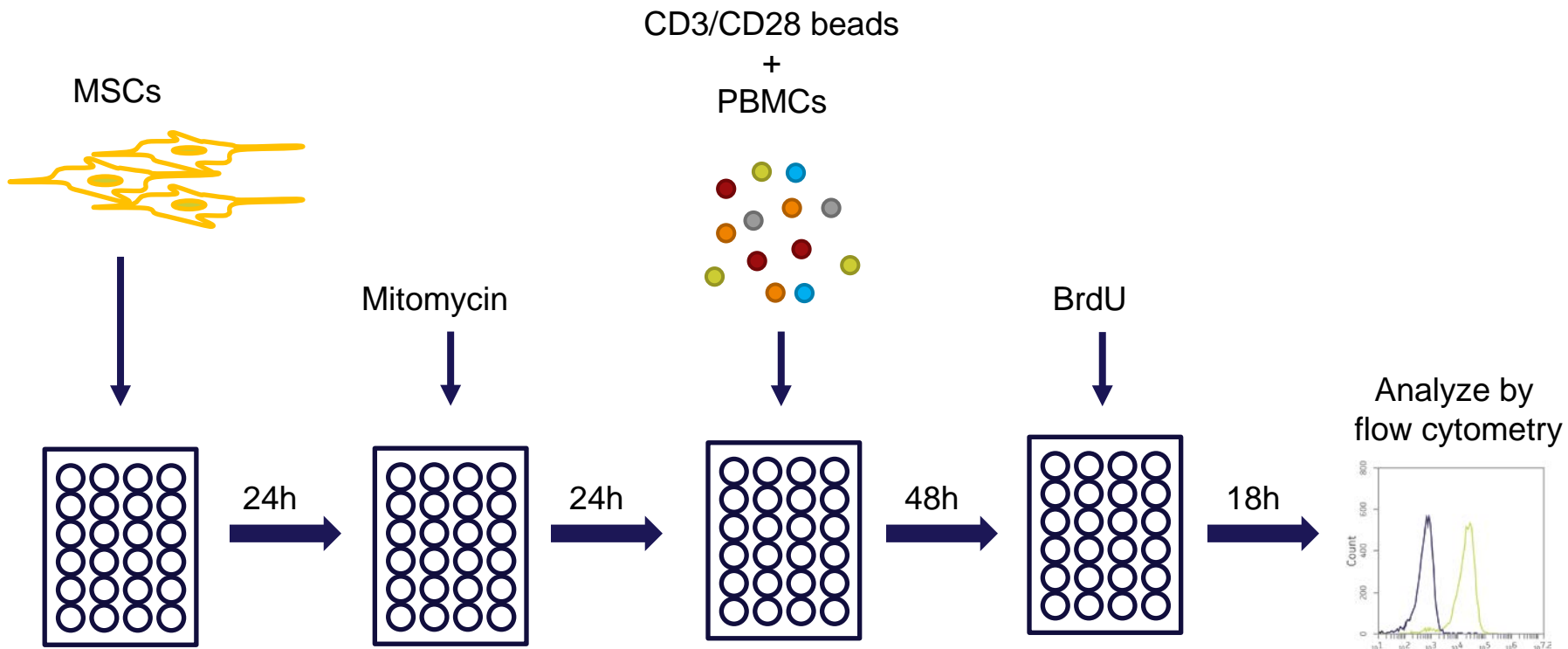
Natural killer (NK) cells have the ability to recognize and eliminate tumor cells, making them ideal candidates for tumor immunotherapy [1,2]. NK cell activity is regulated by the cumulative effects of multiple activating and inhibitory signals that are transmitted through the receptors on the NK cell surface. We have previously genetically modified *in vitro* expanded NK cells to express DAP10 and the chimeric NKG2D receptor containing the CD133 signal domain, which altered the balance between the activating and inhibitory signals of NK cells and enhanced the cytotoxicity against NKG2D ligand-bearing tumors [3]. Further, expression of anti-CD19 chimeric antigen receptors (CARs) containing 41BB and CD133 signal domains on NK cells enhanced the activating signals originating from CD19 antigen

engagement, leading to cytotoxicity specifically against B-cell leukemia [4].

Trogocytosis is a process in which membrane patches are exchanged between target and immune cells [5–7]. When an NK cell interacts with a target cell, an immune synapse, which is strong enough to allow the transfer of small membrane patches from one cell to its partner cell, is formed [8,9]. Therefore, target cell surface molecules can be found on the surface of NK cells. The chemokine receptor CXCR7 has been shown to be transferred from donor cells onto the surface of NK cells via trogocytosis, and this transfer stimulated NK cell migration, leading to enhanced lymph node homing [10,11]. Similarly, T cells captured NKG2D and NKp46 ligands on tumor cells through trogocytosis and promoted NK cell activity [12].

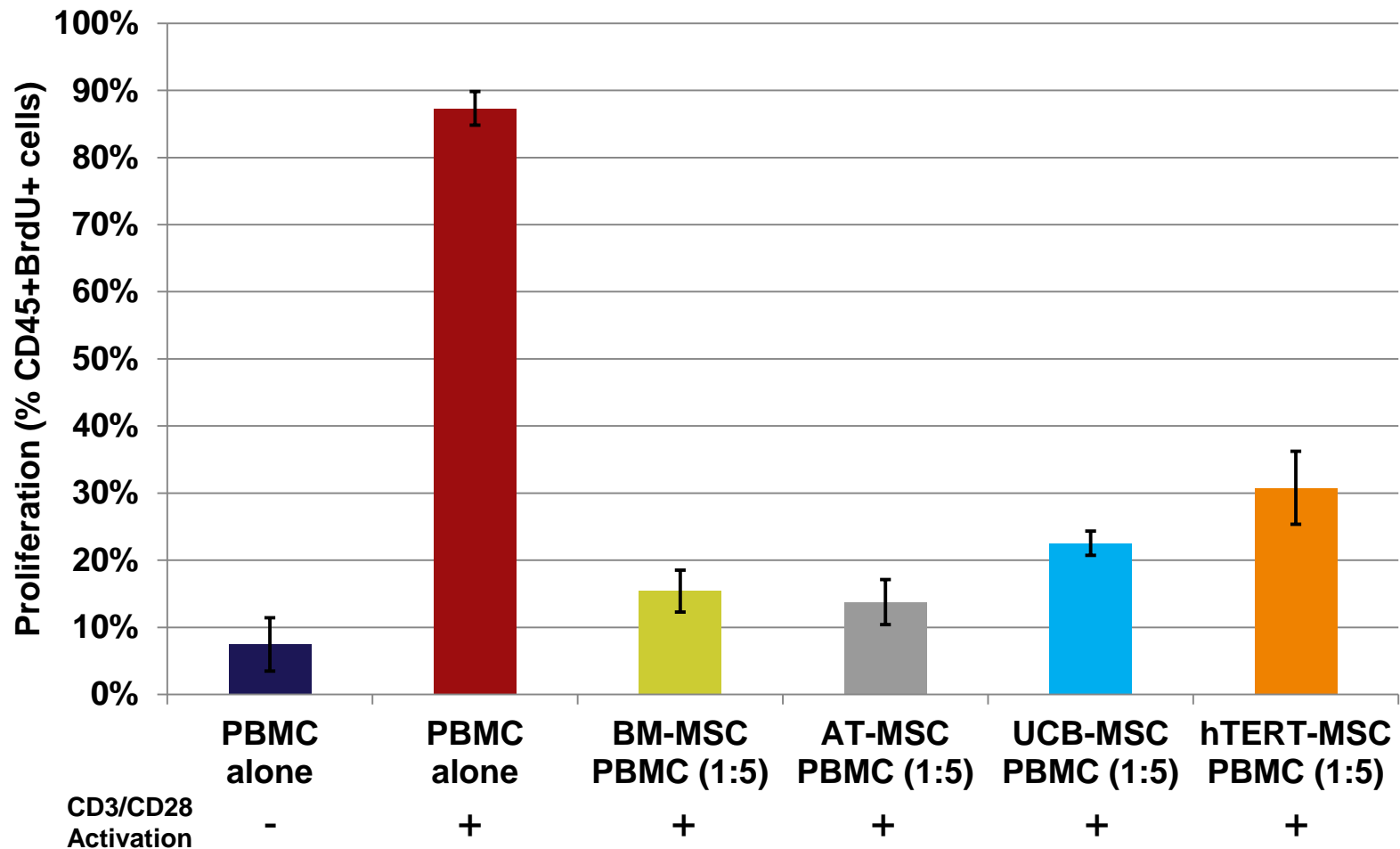


# Immunosuppressive assay using PBMCs



For detailed differentiation protocols  
see the ATCC website

# MSCs suppress activated T-cell proliferation



# ATCC Mesenchymal Stem Cells

The complete study, presented at ISSCR 2014, is available on the ATCC website:

**Comparative analysis of cell proliferation, immunosuppressive action, and multi-lineage differentiation of immortalized MSC and MSC from bone marrow, adipose tissue, and umbilical cord blood**



THE ESSENTIALS OF  
LIFE SCIENCE RESEARCH  
GLOBALLY DELIVERED™

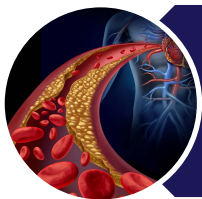
Dezhong Yin, Ph.D., Joy A. Wells, James Clinton, Ph.D. and Chaozhong Zou, Ph.D.  
*ATCC Cell Systems, 22 Firstfield Rd, Suite 180, Gaithersburg, MD 20878, USA*

ISSCR Poster #: F-3115

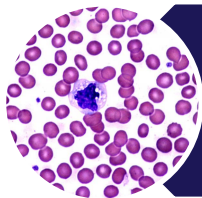
For more information on our MSC products: [www.atcc.org/stemcells](http://www.atcc.org/stemcells)

| ATCC® No.   | Type         | Description   |
|-------------|--------------|---|
| PCS-500-010 | Primary      | Umbilical Cord-derived Mesenchymal Stem Cells             |
| PCS-500-011 | Primary      | Adipose-derived Mesenchymal Stem Cells                    |
| PCS-500-012 | Primary      | Bone Marrow-derived Mesenchymal Stem Cells                |
| SCRC-4000   | Immortalized | hTERT Immortalized Adipose-derived Mesenchymal Stem Cells |

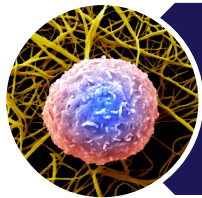
# Outline



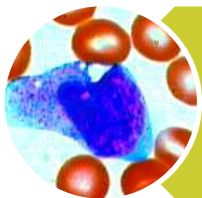
Background



CD34+ hematopoietic stem & progenitor cells

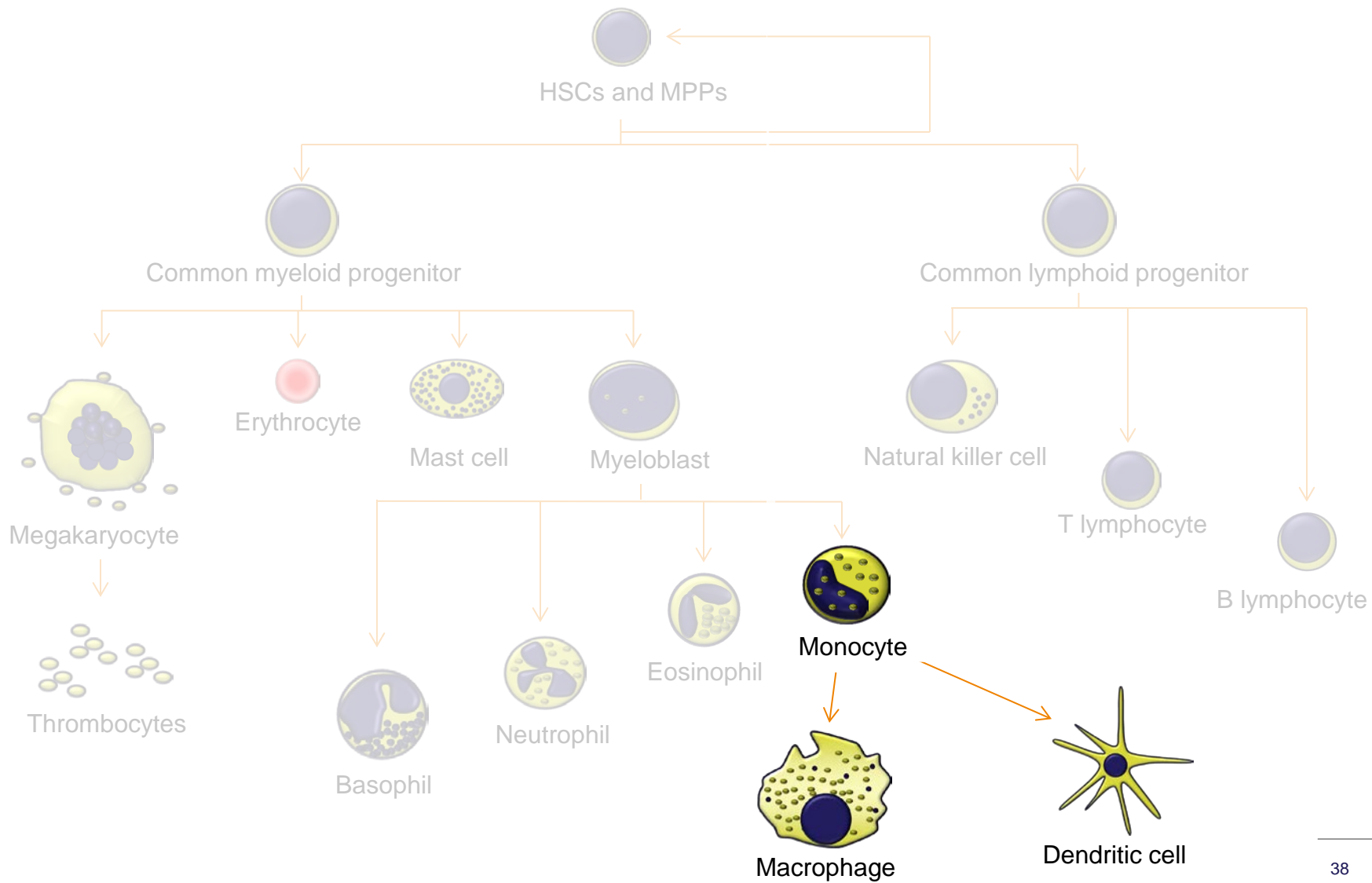


Mononuclear cells



CD14+ monocytes

# Primary monocytes (CD14+)



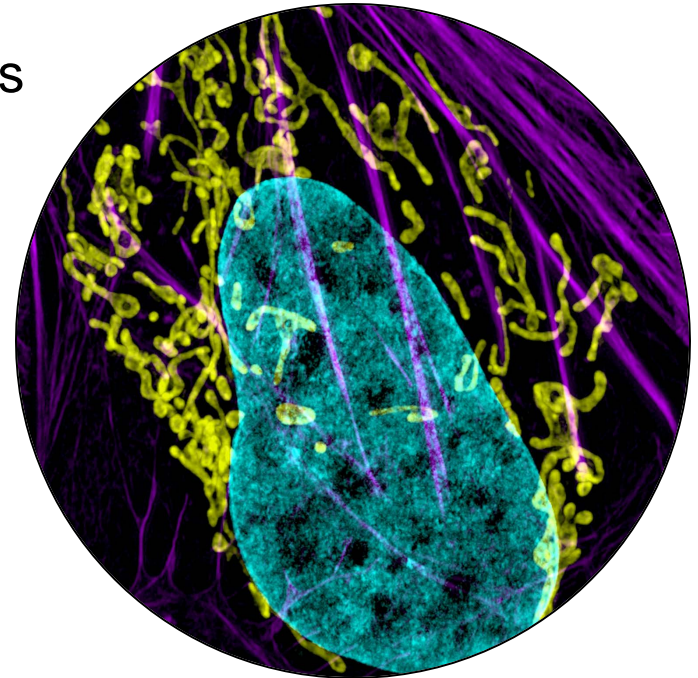
# Primary CD14+ monocytes

## Applications

- Isolation and study of monocyte subtypes
- Differentiation
- Phagocytosis
- Chemotaxis/migration assays

## Key research areas

- Immunology
- Monocyte polarization
- Inflammation associated pathologies
- Infectious disease
- Cytokine release



Bone cancer cell, courtesy of Burnett Lippincott-Schwartz, National Cancer Institute

# Primary monocyte-derived macrophages are suitable for studying *Lm*, cell lines are not

OPEN ACCESS Freely available online

PLOS ONE

## CD14-Dependent Monocyte Isolation Enhances Phagocytosis of *Listeria monocytogenes* by Proinflammatory, GM-CSF-Derived Macrophages

Caroline Neu<sup>1</sup>, Anne Sedlag<sup>1</sup>, Carina Bayer<sup>2</sup>, Sabine Förster<sup>3</sup>, Peter Crauwels<sup>3</sup>, Jan-Hendrik Niess<sup>4</sup>, Ger van Zandbergen<sup>1</sup>, Giada Frascaroli<sup>2</sup>, Christian U. Riedel<sup>1\*</sup>

**1** Institute of Microbiology and Biotechnology, University of Ulm, Ulm, Germany, **2** Institute of Virology, University Medical Center Ulm, Ulm, Germany, **3** Division of Immunology, Paul-Ehrlich-Institute, Federal Institute for Vaccines and Biomedicines, Langen, Germany, **4** Department of Visceral Medicine and Surgery, Inselspital, Bern, Switzerland

### Abstract

Macrophages are an important line of defence against invading pathogens. Human macrophages derived by different methods were tested for their suitability as models to investigate *Listeria monocytogenes* (*Lm*) infection and compared to macrophage-like THP-1 cells. Human primary monocytes were isolated by either positive or negative immunomagnetic selection and differentiated in the presence of granulocyte macrophage colony-stimulating factor (GM-CSF) or macrophage colony-stimulating factor (M-CSF) into pro- or anti-inflammatory macrophages, respectively. Regardless of the isolation method, GM-CSF-derived macrophages (GM-Mφ) stained positive for CD206 and M-CSF-derived macrophages (M-Mφ) for CD163. THP-1 cells did not express CD206 or CD163 following incubation with PMA, M- or GM-CSF alone or in combination. Upon infection with *Lm*, all primary macrophages showed good survival at high multiplicities of infection whereas viability of THP-1 was severely reduced even at lower bacterial numbers. M-Mφ generally showed high phagocytosis of *Lm*. Strikingly, phagocytosis of *Lm* by GM-Mφ was markedly influenced by the method used for isolation of monocytes. GM-Mφ derived from negatively isolated monocytes showed low phagocytosis of *Lm* whereas GM-Mφ generated from positively selected monocytes displayed high phagocytosis of *Lm*. Moreover, incubation with CD14 antibody was sufficient to enhance phagocytosis of *Lm* by GM-Mφ generated from negatively isolated monocytes. By contrast, non-specific phagocytosis of latex beads by GM-Mφ was not influenced by treatment with CD14 antibody. Furthermore, phagocytosis of *Lactococcus lactis*, *Escherichia coli*, human cytomegalovirus and the protozoan parasite *Leishmania major* by GM-Mφ was not enhanced upon treatment with CD14 antibody indicating that this effect is specific for *Lm*. Based on these observations, we propose macrophages derived by *ex vivo* differentiation of negatively selected human primary monocytes as the most suitable model to study *Lm* infection of macrophages.

Citation: Neu C, Sedlag A, Bayer C, Förster S, Crauwels P, et al. (2013) CD14-Dependent Monocyte Isolation Enhances Phagocytosis of *Listeria monocytogenes* by Proinflammatory, GM-CSF-Derived Macrophages. PLoS ONE 8(6): e66898. doi:10.1371/journal.pone.0066898

Editors: Jörn Coers, Duke University Medical Center, UNITED STATES OF AMERICA

Received March 7, 2013; Accepted May 13, 2013; Published June 11, 2013

Copyright: © 2013 Neu et al. This is an open-access article distributed under the terms of the Creative Commons Attribution License, which permits unrestricted use, distribution, and reproduction in any medium, provided the original author and source are credited.

Funding: This study was partially funded by a grant of the Carl Zeiss Foundation in the "Programm zur 3. Stärkung von Forschungsstrukturen an Universitäten" to GS, GuZ and CR. The funders had no role in study design, data collection and analysis, decision to publish, or preparation of the manuscript. No additional external funding was received for this study.

Competing Interests: The authors have declared that no competing interests exist.

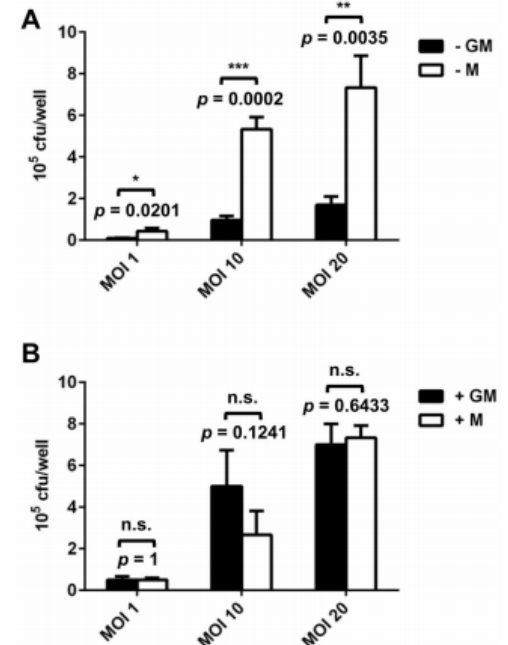
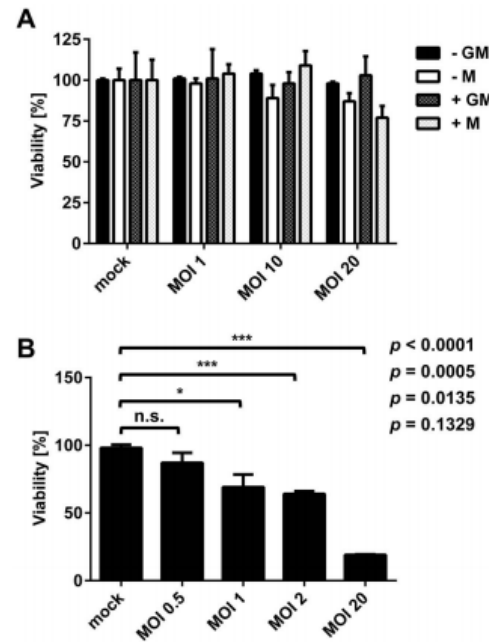
\* Email: christian.riedel@uni-ulm.de

### Introduction

*Listeria monocytogenes* (*Lm*) is a food-borne Gram-positive obligate intracellular pathogen that is able to cope with a wide range of environmental conditions and is thus found in various of habitats [1]. In humans, the disease caused by *Lm* is termed listeriosis and manifests primarily in immunocompromised individuals, pregnant women, newborns, and elderly patients with a mortality of 20–30% in these at risk groups [2]. Infections with *Lm* are usually acquired upon consumption of contaminated food products and thus the first habitat inside the host is the gastrointestinal tract [3]. *Lm* is able to cross the intestinal barrier, subsequently enters the blood and lymph stream, and finally colonizes liver and spleen where it is primarily phagocytosed by resident macrophages [4].

the secretion of two phospholipases, PlcA and PlcB, and the pore-forming toxin listeriolysin O (LLO) [5]. This results in the release of *Lm* into the cytoplasm where it starts to replicate and spread from one cell to another by hijacking the host cell actin cytoskeleton [6].

Macrophages play a central role in activating and finely balancing the pro- and anti-inflammatory pathways of the host immune system to mount effective host responses against invading pathogens. *In vivo*, macrophage differentiation is driven by GM- and M-CSF [7,8]. High levels of GM-CSF induce a pro-inflammatory phenotype resulting in high IL-12 secretion. These pro-inflammatory cells are also termed M1 macrophages. By contrast, M-CSF polarizes macrophages to an anti-inflammatory phenotype characterized by IL-10 secretion, which is referred to

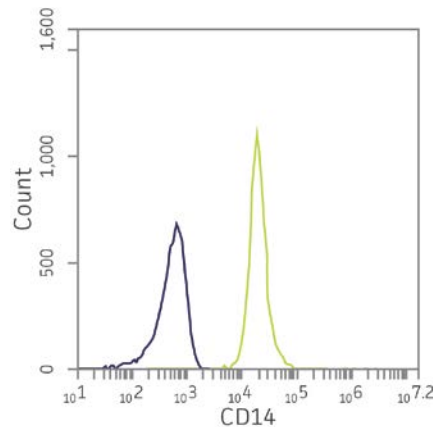
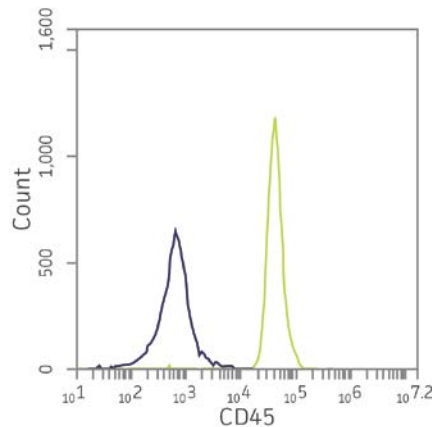




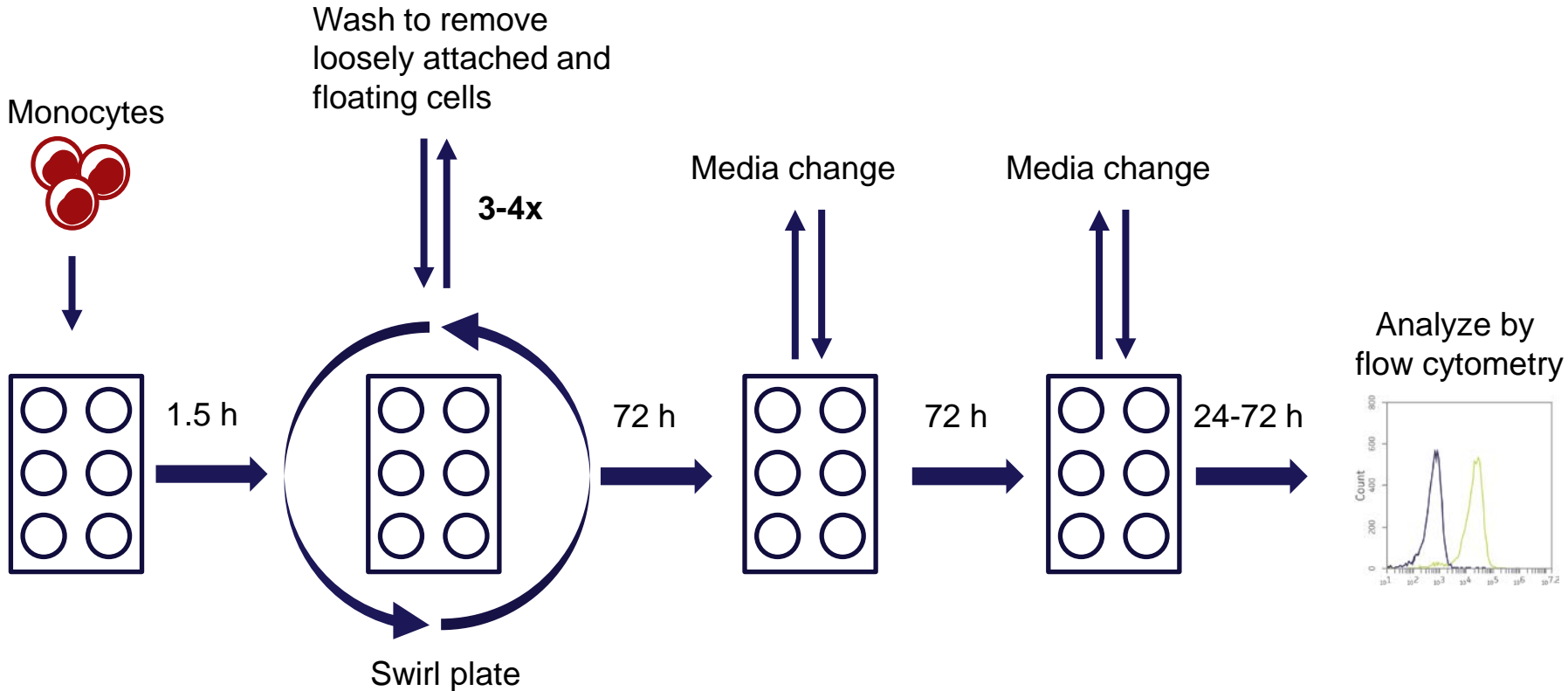
# ATCC primary CD14+ monocytes

- Healthy human volunteer donors; IRB-approved informed consent
- Adult, non-pregnant
- Cryopreserved at P0; Purity:  $\geq 90\%$  CD14+
- Age, gender, ethnicity, and blood type on CoA

| ATCC® No.   | Tissue           | Type              | Size                  |
|-------------|------------------|-------------------|-----------------------|
| PCS-800-010 | Peripheral blood | Monocytes (CD14+) | $\geq 50 \times 10^6$ |



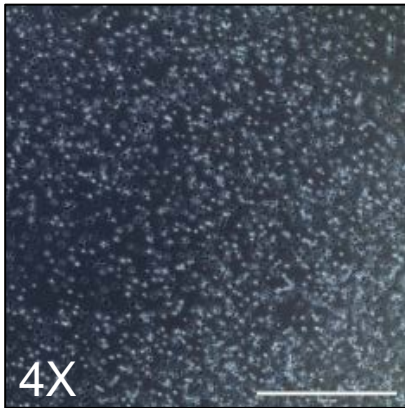
# Macrophage differentiation protocol



For detailed differentiation protocols see the ATCC website

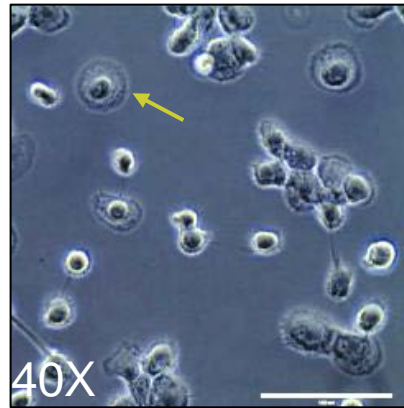
# Generation of CD68+ macrophages from monocytes

Day 1

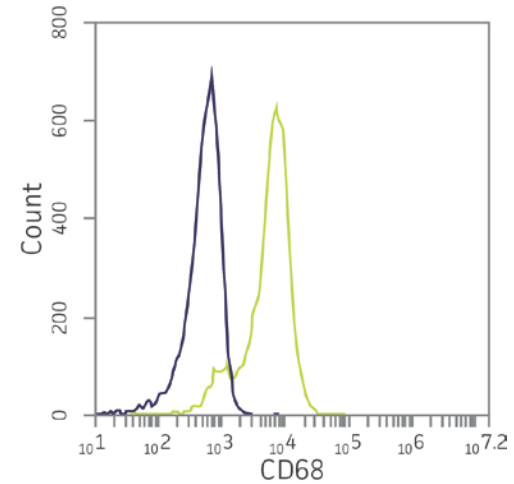


Monocytes

Day 9

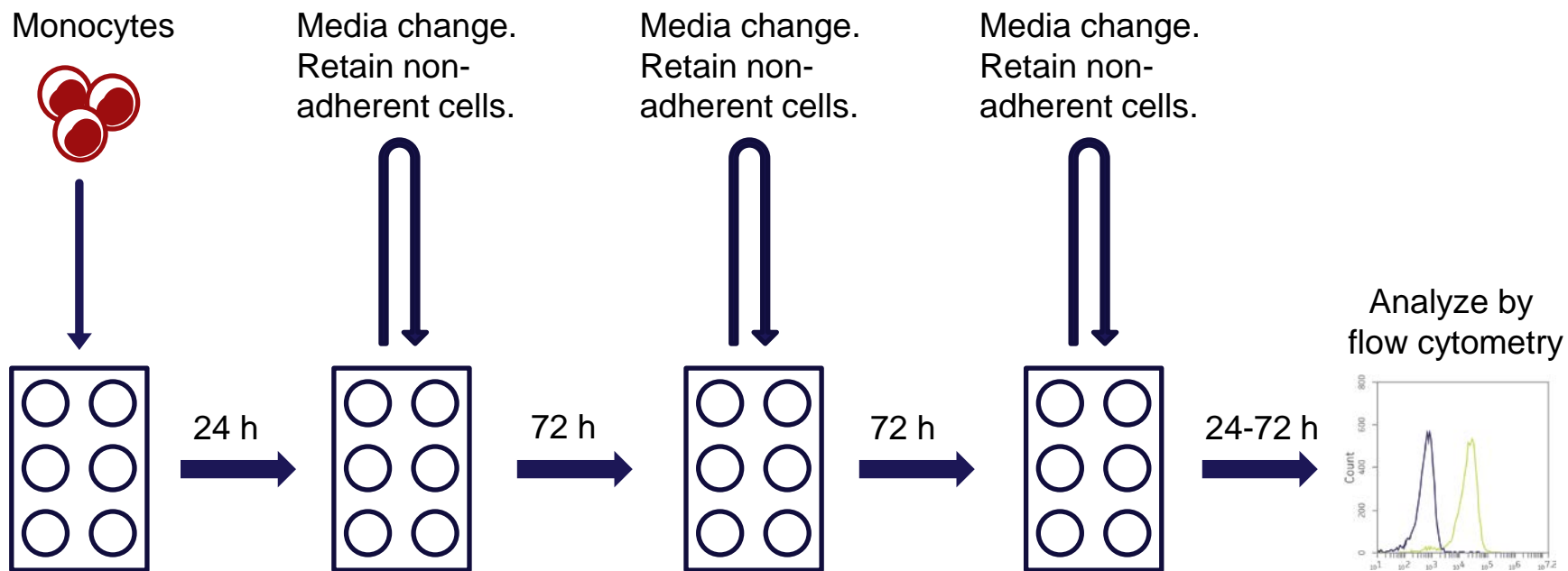


Mature macrophage



- Macrophages differentiated from CD14+ monocytes for 9 days.
- Morphology characteristic of type M1-polarized macrophages.
- > 80% of cells were CD68+

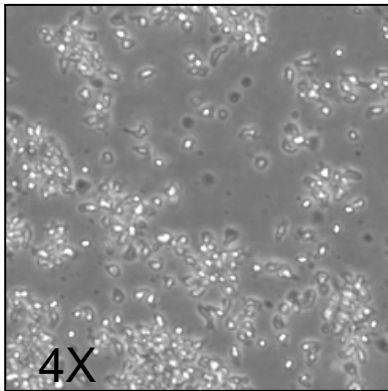
# Dendritic cell differentiation protocol



For detailed differentiation protocols  
see the ATCC website

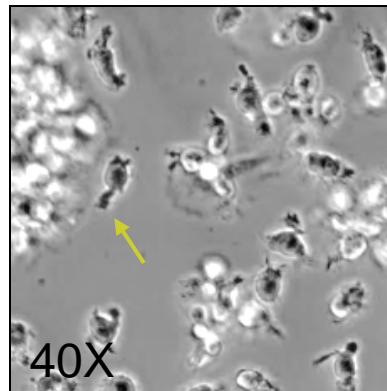
# Generation of CD83+ DCs from monocytes

Day 1



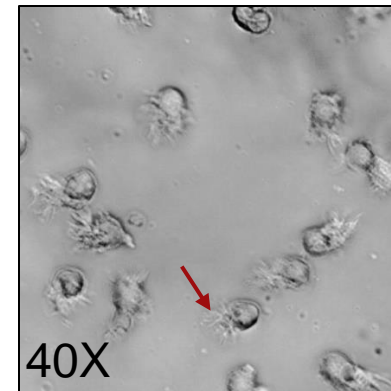
Monocytes

Day 6



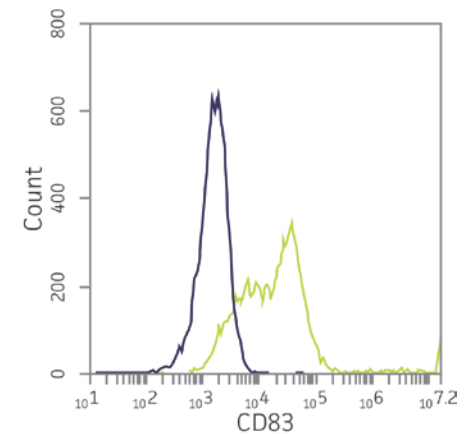
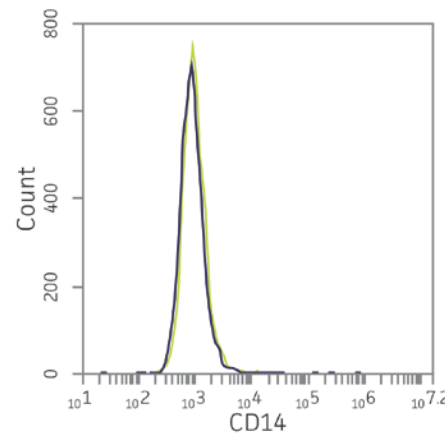
Immature DCs

Day 8



Mature DCs

- After 8 days differentiation 95% of non-adherent cells were CD14-
- >70% of cells were CD83+





# Summary

ATCC offers a variety of well-characterized and functionally validated primary hematopoietic cell types

- CD34+ HSPCs
- BMMCs and PBMCs
- CD14+ monocytes

ATCC provides hematopoietic lineage-specific differentiation protocols

- Erythroid
- Megakaryocyte
- Non-specific myeloid
- Dendritic
- Macrophage

ATCC hematopoietic cells are useful in numerous areas of research

# Thank you!

Register for more webinars in the ATCC “*Excellence in Research*” webinar series at [www.atcc.org/webinars](http://www.atcc.org/webinars).

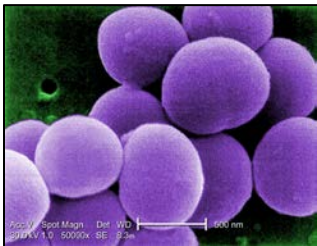


**March 5, 2015**

**10:00 AM, 3:00 PM ET**

David Clawson, *Lead Biologist*, ATCC

Enhancing vector-borne research with biological and molecular standards



**March 19, 2015**

**10:00 AM, 3:00 PM ET**

Scott Sutton, Ph.D., *Principal*, Microbiology Network and  
Tracy Vandebroek, *Product Line Business Manager*, ATCC

Microbiology quality control as described in the Compendia

**Thank you for joining today!**  
**Please send additional questions to [tech@atcc.org](mailto:tech@atcc.org)**